

2025

40th ANNUAL MEETING

Academy of
Osseointegration



Controversies in
Implant Dentistry:
HOW TO
MAKE IT EASY

March 27-29
Seattle, Washington



**REGISTRATION
PACKET**

For more
information,
visit osseo.org



Greetings From the Program Chair



The Annual Meeting Program Committee is delighted to invite you to attend the Academy of Osseointegration's 2025 Annual Meeting, March 27 - 29 in Seattle, WA.

This program, "Controversies in Implant Dentistry: How To Make It Easy," has been assembled with key opinion leaders in implant dentistry, including practicing clinicians, support staff, educators, researchers and students.

The committee has gathered a diverse and relevant variety of topics and evidence-based content to serve and support the dental community to advance the science and practice of implant dentistry, thus enhancing patient care and outcomes.

Thursday morning begins with the popular Corporate Forum Presentations showcasing the latest technologies with at least 20 industry-sponsored sessions. The traditional Opening Symposium returns Thursday afternoon with a focus on "Which Way is the Easiest One?" beginning with our Keynote Speaker, Dr. Michael Norton, who will discuss "Controversies in Science and the Role of Industry." Drs. Hom-Lay Wang and Paul Rosen will then provide us with results of the AO/AAP Consensus Conference on Peri-implantitis, followed by some exciting point-counterpoint on reduced-dimension implants and one-time abutments. This session will be followed by the Welcome Reception and ePoster presentations in the Exhibit Hall, giving you the chance to catch up with old friends, meet new colleagues and learn about the latest products and services from our corporate affiliates.

New to our meeting this year will be the Town Hall sessions in the Exhibit Hall offered by our sponsors. Be sure to check these out during the Welcome Reception, lunches and refreshment breaks.

Friday morning will start with our first of four Hands-on Workshops. These sessions are a great opportunity to earn Hands-on Workshop hours toward the AO Masters/Diplomate Certificate. On the main podium, we will be exploring new options on "How To Treat the Tissue." Enjoy your lunch in the Exhibit Hall or attend the Young Clinicians' Luncheon to hear presentations by the Academy's younger members. In addition to the abstract sessions running all day on Friday, the afternoon plenary session brings us new concepts on "How to Replace Lost Teeth." Afterwards, join us for "Emerging Leaders: AO's Got Talent" where early-career clinicians present their cases in a bid to win "Best Presentation." The day will close with the President's Reception at MoPOP - the Museum of Pop Culture.

The Saturday morning program will kick off with our internationally-collaborative session on "The Tissue Around the Restoration" with some of the most reputed clinicians in the world. Then take the opportunity to have "Lunch With the Masters" to learn directly from the experts in one-on-one round-table discussions. The meeting will close on a high note with the Closing Symposium entitled "Risk Factor: Host or Material?"

We are looking forward to seeing you in Seattle in March!

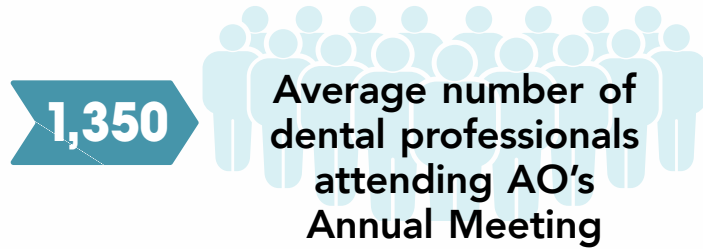
Fouad Khoury, DMD, PhD
AO 2025 Annual Meeting Program Chair

Connect with :     

2025 Annual Meeting Education and Insights

Who should attend this meeting?

Anyone who has an interest in implant therapy ranging from students in training programs and dentists with limited experience to specialists with extensive training.



The Academy's 2025 Annual Meeting will offer:

- 4** Hands-on Workshops
- 36** World renowned presenters
- 47.25** Hours of Continuing Education Credits
- OVER 200** New research presentations

STRENGTHEN
your networking circle

EXPLORE
three days of exhibits

Typical meeting registration by specialty:

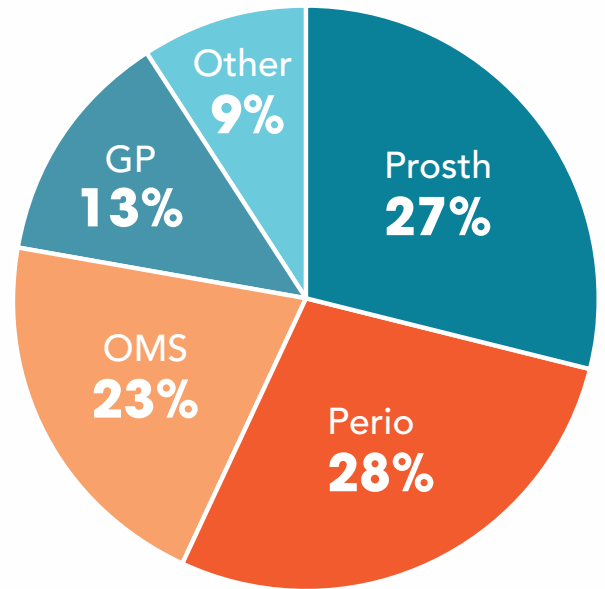


Table of Contents

General Information	4	How to Replace Lost Teeth	15
Education Information	7	Emerging Leaders: AO's Got Talent.	16
Schedule-at-a-Glance	8	President's Reception	17
Hands-on Workshops	9	The Tissue Around the Restoration	18
Corporate Forums	11	Lunch With the Masters	19
Opening Symposium: Which Way is the Easiest One?	12	Closing Symposium: Risk Factor: Host or Material?	21
How to Treat the Tissue	13	Exhibitors	22
Young Clinicians' Luncheon	14	Hotel Registration Information	23

General Information

LOCATION

AO's 2025 Annual Meeting will be held at the Seattle Convention Center – Summit Building, located at 900 Pine St., Seattle, WA.

MEETING CONTENT

The meeting is being offered in-person only. Attendees will have access to all recorded sessions through the end of the year, with the ability to claim additional CE credits for up to six months following the meeting. Recorded sessions will **only** be available to people who registered for the in-person meeting.

REGISTRATION

Register **before January 27, 2025** to take advantage of the early registration discount*.

***Non-Members:** Become a member of AO and take advantage of all of the benefits of membership, including savings on your registration fees. Membership applications must be received at least two weeks before each deadline date to be considered for the discounted "member rate." To become a member, visit us online at www.osseo.org/membership.

ACTIVE DUTY MILITARY REGISTRATION DISCOUNT

Actively serving military personnel from any country may receive the early registration rate but are encouraged to pre-register in advance. After the early registration deadline of January 27th, please contact the AO office at registration@osseo.org or 847-439-1919 for instructions. Military personnel must be in uniform and present a valid military ID in order to receive the early rate on site.

SPARK THE SOCIAL MEDIA CONVERSATION!

Start creating buzz now for the Academy's 2025 Annual Meeting by posting meeting related posts and messages using the hashtag #AO25Seattle. When you're in Seattle, share your experiences and be sure to tag us on Instagram, Facebook and X @AcademyOsseo, and on YouTube and LinkedIn @Academy of Osseointegration!



OFFICIAL TRAVEL AGENCY

To book your airline reservation, call AO's official travel agency, Uniglobe Travel Partners, at 1-800-235-9386 (M-F 8:30 am – 7:00 pm CST). Attendees outside the U.S. please call 1-925-838-4445.

HOUSING INFORMATION

The convention hotels include the Hyatt Regency and Sheraton Grand hotels. Both of these hotels are walking distance to the Seattle Convention Center – Summit Building.

Hotel reservations must be made through onPeak, the official AO Housing Bureau, either online or by phone. A credit card guarantee is required. The hotels will not accept reservations directly.



Hotel Rates:

Hyatt Regency Seattle Hotel

\$269 Single/Double (+18% tax)

(Headquarters Hotel - 1/2 block from Seattle Convention Center – Summit Building)

Sheraton Grand Seattle Hotel

\$269 Single/Double (+18% tax)

(2 1/2 blocks from Seattle Convention Center – Summit Building)

Register Online:

For best availability, make your reservation at:
<https://compass.onpeak.com/e/012607855>.

Register by Phone:

855-904-2787 (US & Canada)

312-527-7300 (International)

Mon. – Fri., 9:00 am – 5:30 pm ET

You can also contact AO housing via our support center by emailing AOhotels@onpeaksupport.com.

**The deadline for hotel reservations is
Monday, February 24, 2025.**

Hotel reservations/rate availability are not guaranteed after the room block is full or after February 24, 2025. Please register early – only a limited number of rooms are available.

A portion of the room rate will subsidize the cost of the meeting space rental.

WARNING! onPeak is the only official hotel provider associated with the AO Annual Meeting. We have received reports that other companies are posing as official travel vendors for the Annual Meeting and may contact you offering hotels for your trip. They are not endorsed by or affiliated with the show and entering into financial agreements with such companies is not advised.

General Information

Become an AO member and save!
Visit osseo.org to apply.

AIRPORT AND GROUND TRANSPORTATION

The Seattle-Tacoma International Airport (SEA) is located 15 miles from the Seattle Convention Center and a 35-minute drive.

At SEA Airport, taxis and ride-sharing companies are available on the third floor of the parking garage. One-way rides between the airport and downtown range from \$40-\$55. To arrange for a car service or taxi ride, refer to the travelers' information boards in Baggage Claim or visit the Ground Transportation Plaza on the third floor of the parking garage.

LINK LIGHT RAIL

Sound Transit's Link connects downtown Seattle and the airport. Trains arrive every 8 to 15 minutes, depending on the time of day, and take about 40 minutes to travel between Seattle-Tacoma International Airport (SEA) and Westlake Station in downtown Seattle.

Schedule

Mon-Sat, 5:00 am - 1:45 am
(last northbound train from the airport Westlake Station departs at 11:44 pm)

Sun, 6:00 am - 12:30 am
(last northbound train from the airport to Westlake Station departs at 11:14 pm)

Adult Fare

\$2.25 - \$3.25 (ORCA cards)

Visit soundtransit.org for more information.

SHUTTLES AND COURTESY VEHICLES

Door-to-door vans and airport shuttle services are available to passengers at the Ground Transportation Plaza on the third floor in the SEA Airport parking garage. Premier Airport Shuttle Seattle offers shared and private shuttle service starting from \$33 per person to Downtown Seattle hotels. Book at premierairportshuttle.com

TEMPERATURE

The average March temperatures in Seattle are a high of 57°F and a low of 42°F.

SPOUSE/GUEST PROGRAM

The Academy of Osseointegration is pleased to offer spouse and companion registration for your travel group. If you are planning to bring a guest (limit 2), please complete the "Spouse/Guest" portion of the registration form. The fee provides your guest with entry to the following:

- Thursday evening Welcome Reception
- Friday evening President's Reception; and
- Exhibit Hall

Box lunches are available for pre-purchase for your spouse/guests through Friday, March 14th when you register them for the meeting.

Spouse/Guest registration is not eligible for ADA CERP or other educational credit.

REGISTRATION FEES

	THROUGH JAN. 27	JAN. 28. - MARCH 3	AFTER MARCH 3
AO MEMBER			
Doctor (DDS, DMD, PhD)	\$ 849	\$ 959	\$1,130
Affiliate/Allied Staff (CDT, MDT, RDH, ROT, Office Staff) <i>Note: Each registrant must be their own member, not staff of an AO member.</i>	\$ 370	\$ 425	\$ 590
Student	\$ 185	\$ 215	\$ 240
NON-MEMBER			
Doctor (DDS, DMD, PhD)	\$1,799	\$1,910	\$2,080
Allied Staff (CDT, MDT, RDH, ROT, Office Staff)	\$ 430	\$ 485	\$ 640
Student (letter from Chief of Service required)	\$ 425	\$ 480	\$ 520
Non-Doctor (CEO, PharmD, Scientist, Other)	\$ 420	\$ 475	\$ 630
Spouse/Guest (limit two guests per registrant)	\$160 ea.	\$185 ea.	\$215 ea.

HIGHLIGHTS

of the AO Meeting this year

THE DENTAL GUYS

Visit "The Dental Guys", Wesley Mullins, DDS, and Jonathan Rogers, DMD, in the Exhibit Hall to watch one-on-one interviews with your favorite Annual Meeting speakers!

Drs. Mullins and Rogers are long-standing AO members who are passionate about creating an ongoing conversation regarding all things new in implant dentistry.



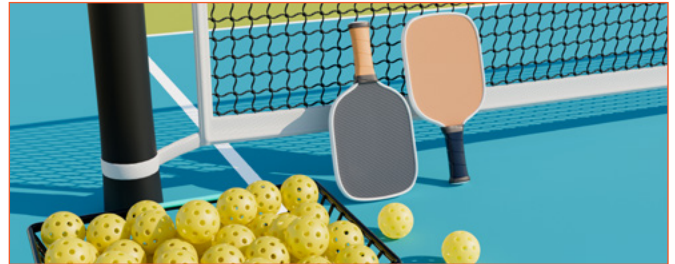
EMIL AND DARIEL **NEW!**

The AO is excited to welcome the energetic and talented orchestral Rock Cello duo - Emil and Dariel! Come to the Opening Session to see AO Members, Emil and Dariel, bend the classical cello, taking it to new heights; plugging in and ripping out solos with a ferocity that awakens the senses. As seen on America's Got Talent, this brother duo represent a new era in music that joins together the past with the future.



PICKLEBALL IN THE EXHIBIT HALL **NEW!**

Seattle is the birthplace of pickleball and what better place to celebrate this growing sport! We will have courts available in the exhibit hall to schedule games and intro classes. All you need are tennis shoes!



CONVERSATIONS WITH THE MASTERS: A CLINICAL TOWN HALL **NEW!**

Get inspired by the latest innovations and product demonstrations in our new Town Hall Presentations. Presentations will run in the center of the Exhibit Hall during the Welcome Reception and scheduled lunches and breaks. Please note: no CE credit will be provided for these sessions.



Explore Seattle

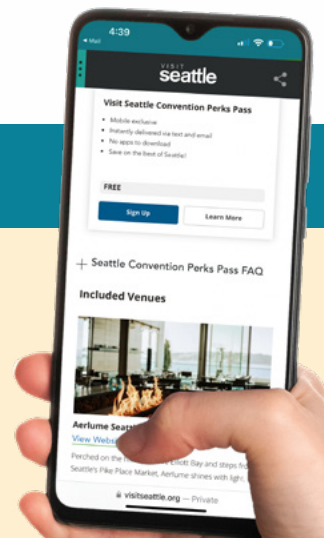
SEE THE SIGHTS

Seattle combines a world-class metropolis within wild, beautiful, natural surroundings. Explore renowned restaurants, breathtaking views, iconic attractions, and vibrant arts and cultural institutions - all within walking distance of world-class hotels and meeting venues.



SEATTLE PERKS PASS

Experience the Emerald City and save as you go! Sign up for this FREE, mobile-friendly passport and receive a collection of discounts at local attractions, restaurants, and retailers. Access to these local deals and discounts will be delivered instantly to your phone.



Education Information

CONTINUING EDUCATION CREDIT INFORMATION

ADA CERP® | Continuing Education Recognition Program

The Academy of Osseointegration is an ADA CERP Recognized Provider. ADA CERP is a service of the American Dental Association to assist dental professionals in identifying quality providers of continuing dental education. ADA CERP does not approve or endorse individual courses or instructors, nor does it imply acceptance of credit hours by boards of dentistry. Concerns or complaints about a CE provider may be directed to the provider or to the Commission for Continuing Education Provider Recognition at ADA.org/CERP.

This continuing education activity has been planned and implemented in accordance with the standards of the ADA Continuing Education Recognition Program (ADA CERP).

The Academy of Osseointegration designates this activity for up to 47.25 continuing education credits.

All credit hours are subject to change.

Credit is awarded and based on actual number of contact hours, excluding Corporate Forum presentations, Town Hall presentations, breaks, meals and registration periods. Attendees may claim fewer hours in accordance with their

actual attendance. The current term of acceptance extends from 11/1/2022 - 12/31/2026.

The formal continuing education program for the Academy of Osseointegration is accepted by the Academy of General Dentistry (Recognition # 145608) for Fellowship/Mastership credit.

The Academy of Osseointegration is also a recognized continuing education provider for the Dental Board of California (RP 3090).

The Academy of Osseointegration is the sole provider of continuing education and is responsible for the program content and faculty selection. The Academy assures that all continuing education presentations are independent of commercial influences. In addition, the Academy of Osseointegration ensures that the scientific basis for clinical and technical CE content is presented in each course through a peer-review process. Speakers are also required to provide an assessment of the benefits and risks associated with any clinical recommendations or treatment options presented.



Schedule-at-a-Glance

Enjoy six months of access to recordings for CE Credit.

WEDNESDAY, MARCH 26

3:00 – 6:00 pm
Registration

THURSDAY, MARCH 27

7:00 am – 6:00 pm
Registration

8:00 am – noon
Corporate Forum Presentations

11:45 am – 7:15 pm
Exhibit Hours

Noon – 1:00 pm
Complimentary Lunch

12:10 – 1:00 pm
Town Hall Presentations and ePoster Presentations

1:00 – 1:30 pm
Welcome and Opening Remarks

1:30 – 5:45 pm
Opening Symposium: Which Way Is the Easiest One?

2:45 – 3:30 pm
Refreshment Break and Town Hall Presentations

5:45 – 7:15 pm
Welcome Reception, Town Hall Presentations and ePoster Presentations

7:30 – 9:30 pm
Young Clinicians' Reception

FRIDAY, MARCH 28

7:00 am – 4:00 pm
Registration

8:00 am – noon
HOW 1: Osseodensification: Optimize the Site To Optimize the Outcome - Evidence and Clinical Protocols

8:00 am – noon
Oral Clinical Research Presentations

8:15 am – noon
How To Treat the Tissue

9:30 am – 4:00 pm
Exhibit Hours

9:45 – 10:30 am
Refreshment Break and Town Hall Presentations

Noon – 1:30 pm
Complimentary Lunch, Town Hall Presentations and ePoster Presentations

Noon – 1:30 pm
Young Clinicians' Luncheon

1:00 – 5:00 pm
HOW 2: Soft Tissue Grafting Using Tunneling Approaches

1:30 – 4:55 pm
Clinical Innovations

1:30 – 5:10 pm
Oral Scientific Research Presentations

1:30 – 5:15 pm
How To Replace Lost Teeth

3:00 – 3:45 pm
Refreshment Break and Town Hall Presentations

5:15 – 6:00 pm
Emerging Leaders: AO's Got Talent

7:00 – 9:00 pm
President's Reception at MoPOP

SATURDAY, MARCH 29

7:00 am – 3:00 pm
Registration

8:00 am – noon
HOW 3: Make It Easy: Sinus Grafting

8:15 am – noon
The Tissue Around the Restoration

9:30 am – 2:00 pm
Exhibit Hours

9:45 – 10:30 am
Refreshment Break and Town Hall Presentations

Noon – 1:30 pm
Complimentary Lunch and Town Hall Presentations

Noon – 1:30 pm
Lunch With the Masters

1:00 – 5:00 pm
HOW 4: Digital Implant Planning

1:30 – 2:15 pm
Award Ceremony and Annual Business Meeting

2:15 – 5:15 pm
Closing Symposium: Risk Factor: Host or Material?

QUESTIONS?

Contact the AO Executive Office
85 W. Algonquin Rd., Suite 550
Arlington Heights, IL 60005
Phone: (800) 656-7736 or
(847) 439-1919
E-mail: academy@osseo.org
Website: osseo.org

FRIDAY, MARCH 28

Hands-on Workshops

\$995 per session

Admission by ticket only • Attendance is limited • Pre-registration is required. On-site registration will not be permitted.

Please register online at www.osseo.org.

Hands-on Workshops will NOT be recorded for on-demand viewing.

Each session will provide registrants the opportunity to put their skills to practice using hands-on materials. Materials will vary for each session and are described below.

HOW-1

8:00 am - noon

Osseodensification: Optimize the Site To Optimize the Outcome - Evidence and Clinical Protocols

Salah Huwais, DDS
Charles Schwimer, DMD



Osseodensification is an evidence-based approach to osteotomy preparation that enhances implant stability and bone density without compromising healing. This course will present the biomechanical, histological healing timeline, and clinical short- and long-term evidence. We will discuss bone plasticity and its clinical effect on site optimization through compaction autografting to increase implant stability. We will also cover the clinical versatility of this novel technique including crestal sinus grafting, plastic ridge expansion, guided expansion ridge augmentation and molar septum expansion with immediate implant placement. Several clinical protocols and case examples will be outlined and demonstrated. This course includes hands-on practical training utilizing actual bone specimens and simulation models.

Upon completion of this presentation, participants should be able to: 1) describe the scientific principal of Osseodensification; 2) explain how to optimize implant stability and immediate loading; 3) discuss how to manage the resorbed and the borderline ridge with adequate instrumentation; and 4) recognize what can go wrong and how to prevent and manage complications.



HOW-2

1:00 - 5:00 pm

Soft Tissue Grafting Using Tunneling Approaches

Sonia Leziy, DDS



Minimally invasive soft tissue grafting using tunneling procedures have emerged as an effective technique for both periodontal and peri-implant phenotype enhancement to establish optimal tissue health and aesthetics. These techniques minimize the need for large incisions or open flaps where they are not required for implant placement or for the placement of bone grafting materials. The potential advantages of tunneling approaches include improved graft vascularization and graft stabilization, producing excellent tissue volume gains and highly esthetic outcomes. This session will include a didactic review and hands-on implementation of tunneling procedures using VISTA and mucosal access incisions. Procedure techniques, clinical applications, limitations will be presented. Autogenous tissue harvesting methods and indications will also be discussed and contrasted to soft tissue allografts. Suturing materials and techniques will be illustrated for both donor and recipient site management.

Upon completion of this presentation, participants should be able to: 1) recognize the benefits of minimally invasive tunneling procedures for enhancing soft tissues, with a focus on improving graft vascularization, stabilization and achieving aesthetically pleasing outcomes; 2) implement VISTA and mucosal access incision techniques through both didactic and hands-on training, covering the technical aspects, clinical applications, and limitations of these procedures; and 3) compare autogenous tissue harvesting and soft tissue allografts, learning about their respective indications, benefits, and suturing techniques for effective management of both donor and recipient sites.

Please register online
at www.osseo.org



SATURDAY, MARCH 29

Hands-on Workshops

\$995 per session

Admission by ticket only • Attendance is limited • Pre-registration is required. On-site registration will not be permitted.

Please register online at www.osseo.org.

Hands-on Workshops will NOT be recorded for on-demand viewing.

Each session will provide registrants the opportunity to put their skills to practice using hands-on materials. Topics will vary for each session and are described below.

HOW-3

8:00 am - noon

Make It Easy: Sinus Grafting

Homa Zadeh, DDS, PhD



Maxillary sinus floor augmentation (MSFA) techniques have significantly advanced, prioritizing both predictability and minimal invasiveness to improve patient outcomes. This hands-on workshop will provide an in-depth review of two key approaches: the lateral window and transcrestal techniques, highlighting their respective advantages, challenges, and clinical indications.

Participants will learn about the latest technological innovations that enhance procedural precision, including dynamic navigation systems, which offer real-time feedback for improved accuracy, and piezosurgery, a minimally invasive method for precise bone cutting while preserving soft tissues. The workshop will also cover advancements in material selection, such as bone grafts, biomaterials and biologics, tailored to optimize healing and long-term stability.

Through simulated exercises, attendees will have the opportunity to apply these techniques in a practical setting, gaining hands-on experience with cutting-edge tools and materials. Additionally, the course will include a discussion of case-based scenarios, troubleshooting common complications, and decision-making strategies for successful MSFA outcomes.

This workshop is ideal for clinicians looking to expand their skill set with the most up-to-date methods for managing atrophic posterior maxilla cases, while ensuring a patient-centered approach to surgical care.

Upon completion of this presentation, participants should be able to: 1) explain lateral window versus transcrestal techniques for MSFA; 2) list dynamic navigation and piezosurgery technologies for MSFA; and 3) select materials for MSFA.

HOW-4

1:00 - 5:00 pm

Digital Implant Planning

Julian Conejo, DDS, MSc



In this program, clinicians will learn how to create The Digital Clone for interdisciplinary treatment planning of implant cases. Tips and tricks on intraoral scanning, CBCT images and clinician/laboratory communication with digital tools will be presented. New digital components for single and full-arch cases to facilitate the delivery of different types of implant-supported restorations will be explained. New zirconia and 3D printed materials will be discussed as well as the latest digital impression techniques for full-arch implant supported restorations.

Upon completion of this presentation, participants should be able to: 1) explain how to create The Digital Clone; 2) improve clinician/laboratory communication with digital tools; and 3) recognize all new digital components for full-arch cases.



Please register online
at www.osseo.org



THURSDAY, MARCH 27 Corporate Forums

8:00 am – noon

NOT FOR CREDIT

Corporate Forum sessions are open to all Annual Meeting attendees at no charge.

This collection of sessions offers a unique and significant opportunity to view the latest research and developments in the field of craniofacial implant technology. The Academy is offering at least 20 industry-hosted presentations featuring the latest implant technology. Registrants may attend any presentation with the option of changing rooms at any time.

The topics and presenters are selected by the participating companies without input from the Academy of Osseointegration.

Please note: Corporate Forums will not be available for on-demand viewing.

Participating companies as of November 8th include:



11:45 am – 7:15 pm
Exhibit Hours

Noon – 1:00 pm
Complimentary Lunch
in the Exhibit Hall

12:10 – 1:00 pm
Town Hall Presentations and
ePoster Presentations



THURSDAY, MARCH 27

Opening Symposium

1:00 - 1:30 pm

Welcome and Opening Remarks



Dr. Neugebauer

Joerg Neugebauer, DDS, PhD
President

Fouad Khoury, DMD, PhD
Annual Meeting Program Chair



Dr. Khoury

1:30 - 5:45 pm

Which Way is the Easiest One?

Moderator: Fouad Khoury, DMD, PhD

KEYNOTE SPEAKER

1:30 - 2:15 pm

Controversies in Science and the Role of Industry

Michael Norton, BDS, FDS, RCS(Ed)



Upon completion of this presentation, participants should be able to: 1) describe the shortcomings of currently published research; 2) explain the teleological issues that influence implant dentistry; and 3) discuss how to achieve more robust scientifically-driven implant dentistry.

3:30 - 4:30 pm

Point-counterpoint I Are Reduced-dimension Implants a Reliable Alternative in Cases of Reduced Bone Volume?



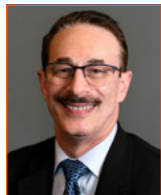
Pro: Lyndon Cooper, DDS, PhD

Contra: Michael Block, DMD

Upon completion of this presentation, participants should be able to: 1) identify the evidence-based literature concerning the use of short implants; 2) discuss when short implants can be used rather than use extensive grafting; and 3) describe the long-term limitations with the use of short implants.

2:15 - 2:45 pm

AO/AAP Consensus Conference Results: Prevention and Management of Peri-implant Disease



Paul Rosen, DMD, MS

Hom-Lay Wang, DDS, MSD, PhD

Upon completion of this presentation, participants should be able to: 1) identify emerging risks for peri-implant mucositis and peri-implantitis; 2) discuss how prosthetic designs can play an important role in minimizing peri-implantitis development; and 3) discuss current methods used for dental implant surface decontamination and surgical treatments.

4:30 - 5:30 pm

Point-counterpoint II One-Time Abutments: An Easy Prosthetic Workflow



Pro: Georgios Romanos, DDS, PhD

Contra: Clark Stanford, DDS, PhD, MHA

Upon completion of this presentation, participants should be able to: 1) discuss the framework to the challenges of 3D tissue architecture at the time of restoration to predict long-term mucosal support; 2) determine when a staged approach is needed; and 3) create the workflow(s) needed to allow prosthetic flexibility in the final restoration.

2:45 - 3:30 pm

Refreshment Break and Town Hall Presentations

5:45 - 7:15 pm

Welcome Reception, Town Hall Presentations and ePoster Presentations



5:30 - 5:45 pm

Point-counterpoint Panel Discussion

7:30 - 9:30 pm

Young Clinicians' Reception

Please register online
at www.osseo.org



FRIDAY, MARCH 28

How To Treat the Tissue

8:15 am – noon

Moderator: Joey Chen, DDS

8:15 – 8:45 am

Biology of Bone Regeneration

Reinhard Gruber, PhD

Upon completion of this presentation, participants should be able to: 1) recapitulate the cellular basis of bone regeneration; 2) discuss molecular mechanisms of bone regeneration; and 3) explain the role of osteocytes in osseointegration.



8:45 – 9:15 am

Progressive Bone Loss and Peri-implantitis

Frank Schwarz, DDS, PhD

Upon completion of this presentation, participants should be able to: 1) discuss whether Progressive Marginal Bone Loss (PMBL) occurring beyond initial bone remodeling is linked with bleeding on probing; 2) differentiate between IBR, PMBL and peri-implantitis; and 3) explain why clinical data does not allow for a determination of ongoing PMBL.



9:15 – 9:45 am

Daily Maintenance of Bone and Soft Tissue Utilizing Partial Extraction Therapy and Digital Technology: The Prosthetic Biology Concept

Richard Martin, DDS

Upon completion of this presentation, participants should be able to: 1) explain partial extraction therapy and when indicated; 2) describe how socket shield and root submergence maintain alveolar bone and soft tissue; and 3) discuss the significance and how to design digital prosthetic in PET.

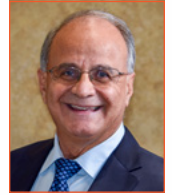


10:30 – 11:00 am

Crestal Sinus Grafting Using Osseodensification

Michael Pikos, DDS

Upon completion of this presentation, participants should be able to: 1) recognize the indications and contraindications for using an osseodensification-based crestal sinus graft protocol for immediate implant placement; 2) discuss the surgical protocol of crestal sinus grafting with immediate implant placement and the use of osseodensification burs; and 3) explain the prevention, recognition and management of complications arising from osseodensification-based crestal sinus grafting with immediate implant placement.



11:00 – 11:30 am

Technical Considerations in Hard Tissue Reconstruction

Tara Aghaloo, DDS, MD, PhD

Upon completion of this presentation, participants should be able to: 1) discuss strategies, techniques, and technologies to enhance bone regeneration and stability; 2) identify the techniques to regenerate deficient alveolar ridges to facilitate dental implant predictability and esthetics; and 3) explain how to achieve long-term stability and predictability of their hard tissue augmentation techniques.



11:30 am – noon

Overcoming Failure: Navigating Implant and Prosthetic Rehabilitation

Wael Att, DDS, DMD, PhD

Upon completion of this presentation, participants should be able to: 1) identify components of the digital workflow; 2) discuss how the digital workflow can help in treatment after failed grafting procedures; and 3) explain how grafting procedures can be reduced through proper planning for less morbidity and reduce risk of failure.



8:00 am – noon

Oral Clinical Research Abstract Presentations

8:00 am – noon

Hands-on Workshop #1

Osseodensification: Optimize the Site to Optimize the Outcome - Evidence and Clinical Protocols

Salah Huwais, DDS

Charles Schwimer, DMD

See page 9 for full description.

9:45 – 10:30 am

Refreshment Break and Town Hall Presentations

Noon – 1:30 pm

Complimentary Lunch, Town Hall Presentations and ePoster Presentations

Noon – 1:30 pm

Young Clinicians' Luncheon

See page 14 for full description.

FRIDAY, MARCH 28

Young Clinicians' Luncheon

Noon - 1:30 pm

Admission by ticket only • Complimentary for Annual Meeting registrants, but attendance is limited.

Please register online at www.osseo.org.

Moderator: Simon Párdinas Lopez, DDS, MS

Mastering Implant Dilemmas: Innovative Fixes for Everyday Implant Challenges

Kristen Richey, DDS



This session will focus on addressing common complications encountered in implant dentistry. Exploring creative, yet straightforward, approaches to effectively tackle challenges such as anatomical space constraints, guide fit issues, and other prevalent obstacles will be discussed. Practical techniques and simple solutions to everyday problems can be applied across a variety of practices. This will be engaging discussion on simplifying your implant challenges.

Upon completion of this presentation, participants should be able to: 1) identify and describe common complications in implant procedures; 2) implement creative and straightforward techniques to address everyday challenges in implant dentistry, enhancing their procedural efficiency; and 3) explain how to improve patient outcomes by applying learned strategies to overcome complications in implant procedures, fostering greater confidence in their clinical practice.

Preserving Nature: A Journey to Optimal Esthetic Outcomes in Modern Implant Dentistry

Bradley Lander, MChD, BChD



This session will explore innovative strategies for preserving hard and soft tissue parameters in the esthetic zone, emphasizing techniques that minimize tissue loss to promote long-term esthetic success. Attendees will examine the scientific rationale behind biologically driven approaches, including partial extraction therapies, which are designed to maintain natural tissue architecture and optimize implant outcomes. The session will feature a step-by-step breakdown of these methods, supported by clinical cases demonstrating their practical application. By the end, participants will gain a comprehensive understanding of how to incorporate these techniques into their practice, addressing common challenges and achieving predictable, esthetic results in implant dentistry.

Upon completion of this presentation, participants should be able to: 1) explain the scientific rationale behind biologically driven techniques for preserving hard and soft tissue in the esthetic zone, including the principles of partial extraction therapies; 2) identify and address common challenges in esthetic zone implant dentistry, utilizing advanced preservation techniques to achieve optimal outcomes predictably; and 3) apply clinical decision-making strategies to determine when and how to implement tissue-preserving techniques in complex implant cases.



Please register online
at www.osseo.org



1:00 - 5:00 pm

Hands-on Workshop #2

Soft Tissue Grafting Using Tunneling Approaches

Sonia Leziy, DDS

See page 9 for full description.

FRIDAY, MARCH 28

How To Replace Lost Teeth

1:30 – 5:15 pm

Moderator: Joerg Neugebauer, DDS, PhD

1:30 – 2:00 pm

Minimizing Interventions in Implant Dentistry: Practical Clinical Tips

Mariano Polack, DDS, MS



Upon completion of this presentation, participants should be able to: 1) recognize the improved surgical and restorative efficiency of molar implants for single and full arch applications; 2) identify material combinations for full arch fixed prostheses that may minimize common complications while reducing the need for extensive surgical intervention; and 3) recognize the innovative digital workflows that can overcome important technological limitations and simplify partial and full-arch implant treatment.

2:00 – 2:30 pm

Clinical Improvements by Digital Workflow

Panos Papanaydakos, DDS, MS, PhD



Upon completion of this presentation, participants should be able to: 1) identify the evidence-based literature concerning the use of short implants; 2) discuss when short implants can be used rather than use extensive grafting; and 3) describe the long-term limitations with the use of short implants.

2:30 – 3:00 pm

Prosthetic and Function in Digital Dentistry

Nimet Adatia, DDS, BSc



Upon completion of this presentation, participants should be able to: 1) utilize digital tools to enhance the accuracy and precision of prosthetic design, improving both esthetic and functional outcomes for patients; 2) apply digital workflows, including intraoral scanning, CAD/CAM, and 3D printing, to streamline the fabrication of crowns, bridges, and full-mouth restorations, reducing chairside adjustments and treatment times; and 3) incorporate digital occlusal analysis and planning tools to ensure optimal prosthetic function and long-term stability, particularly in complex cases involving full-arch restorations or implant-supported prosthetics.

3:45 – 4:15 pm

Should We Use Surgical Guides in Every Case?

Thomas Eshraghi, DMD

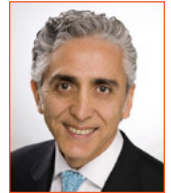


Upon completion of this presentation, participants should be able to: 1) list the basic requirements to create predictable surgical guides; 2) explain how one can incorporate 3D printing for in-office fabrication; and 3) describe how to create 3D printed provisional single and full-arch restorations.

4:15 – 4:45 pm

Minimally Invasive Crestal Sinus Augmentation With Dynamic Navigation

Homa Zadeh, DDS, PhD



Upon completion of this presentation, participants should be able to: 1) create a decision tree for selecting the appropriate technique in managing the atrophic posterior maxilla; 2) explain the scientific evidence for efficacy, risks and complications of various MSFA techniques; and 3) select the technique and materials for transcrestal MSFA with dynamic navigation.

4:45 – 5:15 pm

Next Digital Improvement: Robotic Implant Placement in Daily Routine

Yi Man, BDS, MDS, PhD



Upon completion of this presentation, participants should be able to: 1) recognize the advantages of robotic dental implant systems over traditional guided surgery and navigation techniques, particularly in terms of precision and real-time adjustments; 2) analyze real case studies demonstrating the use of implant robotics in complex clinical scenarios; and 3) evaluate the potential impact of robotic implant systems on the future of dental implant teams and treatment paradigms, including changes in workflow and patient care.

3:00 – 3:45 pm

Refreshment Break and Town Hall Presentations
in the Exhibit Hall

1:30 – 4:55 pm

Clinical Innovations Presentations

1:30 – 5:10 pm

Oral Scientific Research Presentations

5:15 – 6:00 pm

Emerging Leaders: AO's Got Talent

See page 16 for details and
information on how to apply.



Emerging Leaders: AO's Got Talent Case Presentation Competition

The **Emerging Leaders: AO's Got Talent Case Presentation Competition** is an opportunity for early career clinicians to present at AO's 2025 Annual Meeting. Five clinical cases will be selected from all submissions providing an opportunity for clinicians with less than 10 years in practice to present on the main podium. Judges will identify the "Best in Case" presentation and recognize the recipient during the Award Ceremony on Saturday, March 29th.

Applicants must:

- Be an AO member and in practice for less than 10 years;
- Provide a complete case that is surgical, restorative or a combination of both;
- Submit a 1-minute video of themselves describing the case;
- Complete the online application - including the \$125 application fee - **no later than January 7, 2025.**
- If selected, the presenter must register for the 2025 Annual Meeting and present their clinical case in-person on Friday, March 28th in Seattle.

Winners will receive a plaque and complimentary meeting registration to AO's 2026 Annual Meeting. Winners will also be considered for future AO webinars and podium speaking initiatives within AO meetings and events.



To enter the competition or for additional details, please visit osseo.org/emerging-leaders

Deadline to apply is Tuesday, January 7th



FRIDAY, MARCH 28
President's Reception

Complimentary to all Annual Meeting registrants


President's Reception at the MoPOP


7:00 - 9:00 pm, Friday


Complimentary to all attendees, registered guests and exhibitors


Step into a world where creativity and innovation collide! Located in the heart of Seattle, MoPOP celebrates the modern age of popular culture, showcasing everything from legendary music and iconic films to groundbreaking video games and compelling science fiction.

Meet up with old friends and make new connections while exploring three floors of expansive exhibits and experimental installations of pop culture spanning more than 60 years. Food stations and bars will be scattered throughout the museum to encourage exploration and full immersion in powerful world-shaping pop culture.

 **Music Legends:** Immerse yourself in the sounds of an eclectic mix of artists and genres with our interactive exhibits, featuring memorabilia from icons like Jimi Hendrix and Nirvana.

 **Film and Fantasy:** Explore iconic film artifacts, from cult classics to blockbusters. Dive into the realms of your favorite stories and discover the magic behind the screen.

 **Gaming Galore:** Experience the evolution of gaming through our interactive displays and hands-on exhibits that let you play the games that changed the industry.

 **Sky Church:** Engross your senses and let the music come alive in front of a 30-foot-tall screen and state-of-the-art sound system. Sky Church is more than just a performance space – it's a multimedia journey that transports you into the heart of the music.

Whether you're a music lover, a film buff, a gaming enthusiast, or just looking for a fun night out, MoPop offers an unforgettable experience for all registrants!

Stop in for a drink or plan to spend the whole night with us.

Complimentary transportation to and from the event will be available.



SATURDAY, MARCH 29

The Tissue Around the Restoration

8:15 am – noon

Moderator: Frank Schwarz, DMD, PhD

8:15 – 8:45 am

Treatment of Soft Tissue Deficiency Around Implants

Sonia Leziy, DDS



Upon completion of this presentation, participants should be able to: 1) identify the common factors contributing to soft tissue deficiencies around dental implants; 2) explain the digital and analog concepts used to preserve and enhance peri-implant soft tissue health; and 3) recognize preventative measures during the 'primordial phase' of implant treatment that can minimize the risk of developing soft tissue deficiencies.

8:45 – 9:15 am

Prevention and Management of Wound Dehiscences in Bone Grafting Procedures

Frank Schwarz, DMD, PhD



Upon completion of this presentation, participants should be able to: 1) discuss the frequency and nature of commonly reported complications; 2) explain how to prevent and manage postoperative complications caused by wound dehiscence; and 3) describe how graft/membrane exposures can lead to loss of the graft.

9:15 – 9:45 am

Implants in the Esthetic Zone: Risks, Complications and Solutions

Arndt Happe, DDS, PhD



Upon completion of this presentation, participants should be able to: 1) describe comprehensive planning for implants in the esthetic zone; 2) identify typical risk factors; and 3) discuss the benefit of current digital planning features.

10:30 – 11:00 am

Prosthetic Considerations With the All-on-X Concept

Ali Tunkiwala, BDS, MDS

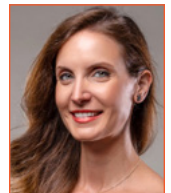


Upon completion of this presentation, participants should be able to: 1) create numerical guidelines for prostheses selection for full-arch cases; 2) recognize the surgical choices that aid in design aspects of various prosthetic solutions; and 3) discuss how to improve lab communication for fabrication of definitive restorations in full arches.

11:00 – 11:30 am

Health Benefits of Full Dentition – Natural or Replaced With Implants?

Eva Anadioti, DDS



Upon completion of this presentation, participants should be able to: 1) identify the physiological functions of full dentition in supporting essential systems within the body; 2) describe how dental implants can restore functionality and health benefits comparable to natural teeth; and 3) discuss how having a full set of teeth impacts mental well-being, confidence, and social interactions.

11:30 am – noon

Digital and Artificial Intelligence (AI) Innovations in Full-arch Implant Treatment

Junying Li, DDS, MS, PhD



Upon completion of this presentation, participants should be able to: 1) list the protocol for integrating occlusion data into full-arch implant digital planning; 2) describe how to obtain accurate full-arch implant intraoral scans using the CISP protocol; and 3) explain how neural networks function in artificial intelligence and how they can be utilized to enhance the full-arch implant workflow.

8:00 am – noon

Hands-on Workshop #3

Make It Easy: Sinus Grafting

Homa Zadeh, DDS, PhD

See page 10 for full description.

Noon – 1:30 pm

Complimentary Lunch and Town Hall Presentations in the Exhibit Hall

9:45 – 10:30 am

Refreshment Break and Town Hall Presentations in the Exhibit Hall

Please register online at www.osseo.org



SATURDAY, MARCH 29

Lunch With the Masters

Noon - 1:30 pm

Members: \$150 - Non-Members: \$175 • Admission by ticket only • Attendance is limited

Please register online at www.osseo.org.

All Lunch With the Masters presentations run concurrently and will not be recorded for on-demand viewing.

These roundtable sessions will facilitate interaction between colleagues and experts in the field of implant dentistry. This small group setting offers the opportunity to delve into specific topics and cases in a more intimate discussion-style format while enjoying lunch with colleagues. Attendees are encouraged to bring their cases to share with the group.

LM-1

Immediacy in Full-Arch: The Next Level

Wael Att, DDS, DMD, PhD



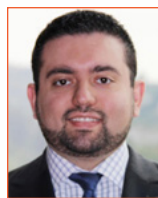
The progressive shift towards implementing digitally driven technology in reconstructive dentistry is obvious. Compared to conventional methods, the ultimate goal of digital technologies is to improve the quality and capabilities in examination, diagnosis, and treatment of the dental patient. It is still questionable, however, whether such digital tools facilitate improved accuracy in data acquisition and assessment, superior efficacy in treatment planning, and more controlled and faster manufacturing process. This presentation will provide an overview about disruptive technologies in implant rehabilitation and discuss different possibilities and advantages when using innovative digital workflows. Focus will be given to new workflows facilitating synergy between surgical, functional and esthetic components in full-arch cases.

Upon completion of this presentation, participants should be able to: 1) identify the different components of the digital workflow; 2) recognize the advantages and bottlenecks of the digital workflow in full-arch cases; and 3) discuss how the quality and predictability of treatment can improved by digital tools.

LM-2

Digital Workflow and 3D Printing Tips for Surgical Practice Integration

Thomas Eshraghi, DMD



Within this session, we will have a Q&A outlining the best way one can implement advanced CAD/CAM planning and 3D printing into a clinical practice. The basic hardware and software requirements will be discussed and unique implementations of the technology to your individual practice needs will be reviewed.

Upon completion of this presentation, participants should be able to: 1) list the hardware and software requirements of a fully digital workflow; 2) describe the resources needed to implement the technology into clinical practice; and 3) discuss the future horizons of 3D printing and guided surgical software.

LM-3

Hard Tissue Grafting With Block and Shell Techniques

Tobias Fretwurst, DDS, PhD



A range of grafting techniques, including shell and block augmentation, are available for bone grafting. This session will cover the principles of bone block grafting, using various clinical cases to illustrate key concepts. Special attention will be given to the biologic principles of bone block grafting. Attendees are encouraged to bring their own cases for discussion of potential treatment options.

Upon completion of this presentation, participants should be able to: 1) explain the indications, techniques, and materials used in bone block grafting for alveolar ridge augmentation; 2) recognize the biological principles in bone block grafting, including bone transplant competence; and 3) recognize the biological principles in bone block grafting, including bone transplant competence.

LM-4

Basic Research in Implant Dentistry

Reinhard Gruber, PhD



Wound healing and osseointegration are ideal fields for translational research, helping us to become respected scientists and teachers who understand their responsibility to the community. I aim to share my research experience and discuss your future academic endeavors.

Upon completion of this presentation, participants should be able to: 1) explain research and teaching experience regarding translational research; 2) discuss future academic endeavors; and 3) deliberate responsibility to the community.

Please register online
at www.osseo.org



SATURDAY, MARCH 29

Lunch With the Masters

Noon - 1:30 pm

Members: \$150 - Non-Members: \$175 • Admission by ticket only • Attendance is limited

Please register online at www.osseo.org.

All Lunch With the Masters presentations run concurrently and will not be recorded for on-demand viewing.

These roundtable sessions will facilitate interaction between colleagues and experts in the field of implant dentistry. This small group setting offers the opportunity to delve into specific topics and cases in a more intimate discussion-style format while enjoying lunch with colleagues. Attendees are encouraged to bring their cases to share with the group.

LM-5

Planning Implants in the Esthetic Zone

Arndt Happe, DDS, PhD



To predictably treat patients with implants in the esthetic zone, a clear and consistent planning sequence is crucial. The presentation will show examples for the workflow for planning including clinical and radiographic examination, photos, esthetic analysis and wax-up/mock-up.

Upon completion of this presentation, participants should be able to: 1) evaluate clinical situations in the esthetic zone; 2) discuss typical pitfalls and risk factors; 3) design a clear and consistent planning sequence; and 4) explain how to design a clear and consistent planning sequence.

LM-6

Digitally Guided Maxillary Sinus Floor Elevation

Yi Man, BDS, MDS, PhD



This presentation will focus on the application of digital technologies in maxillary sinus floor elevation surgery. Specifically, I will introduce the use of surgical guides and navigation techniques in maxillary sinus floor elevation, along with real case studies. Additionally, I will present the application and examples of innovative digital technologies developed by our team for maxillary sinus elevation procedures.

Upon completion of this presentation, participants should be able to: 1) discuss the applications of surgical guides and navigation techniques in maxillary sinus floor elevation procedures, including their benefits and limitations; 2) analyze real case studies demonstrating the use of digital technologies in maxillary sinus floor elevation, enhancing their understanding of practical applications in clinical settings; and 3) explain the innovative digital technologies developed for maxillary sinus elevation, including specific examples of their application in improving surgical outcomes.

LM-7

Bone Grafting: Success Strategies and Pitfalls

Christian Mertens, DDS, PhD



Ridge atrophy and ridge defects represent a major clinical challenge in implantology. These conditions can be caused by various factors such as resorption following tooth loss, periodontal disease, or trauma, leading to substantial functional and aesthetic impairments. This presentation will discuss various bone augmentation techniques for treating ridge atrophy and ridge defects.

Several options are available for augmentation. Autologous bone grafts are considered the gold standard due to their high success rate, rapid healing, and low complication rate. However, they are more invasive and often require a second surgical site for bone harvesting.

This master class will cover the current state of research on hard tissue regeneration, practical treatment algorithms, and clinical cases. Additionally, factors influencing decision-making will be discussed to provide participants with a thorough understanding of bone augmentation procedures.

Upon completion of this presentation, participants should be able to: 1) identify indications and follow guidelines for surgical protocols in advanced grafting procedures; 2) describe the anatomy, biology, and wound healing in advanced grafting procedures; and 3) recognize, manage, and prevent complications associated with advanced bone grafting.

1:00 - 5:00 pm

Hands-on Workshop #4

Digital Implant Planning

Julian Conejo, DDS, MSc

See page 10 for full description.

1:30 - 2:15 pm

Award Ceremony and Annual Business Meeting

SATURDAY, MARCH 29

Closing Symposium

2:15 - 5:15 pm

Risk Factor: Host or Material?

Moderator: Philip Roe, DDS, MS

2:15 - 2:45 pm

Pathogenesis: Immunoreaction/ Proteomics in Peri-implantitis: Titanium Versus Zirconia

Tobias Fretwurst, DDS, PhD

Upon completion of this presentation, participants should be able to: 1) discuss the complex pathogenesis of peri-implant disease, including the role of bacteria, immune cells, and wear particles in the disease process; 2) explore how the microbiome in peri-implantitis varies among patients and how cellular composition depends on individual immune responses, as indicated by histological and proteomic analyses; and 3) describe how personalized treatment approaches, based on sulcus fluid sampling, can enhance the effectiveness of peri-implantitis management and improve clinical outcomes.



3:45 - 4:30 pm

Minimizing Alveolar Resorption Following Extraction

BJ Chen, DDS

Upon completion of this presentation, participants should be able to: 1) recognize the consequences of tooth extraction; 2) utilize d-PTFE membrane in an open membrane technique; and 3) describe the surgical techniques to prevent early exposure of the membrane.



4:30 - 5:15 pm

Risk Factors in Prosthetic Materials

Markus Blatz, DMD, PhD

Upon completion of this presentation, participants should be able to: 1) differentiate modern ceramic materials and their indications; 2) discuss CAD/CAM technology and its diverse applications in esthetic implant dentistry; 3) recognize strategies for success with ceramic restoration implants based on the current scientific evidence; and 4) explain clinical guidelines for long-lasting esthetic implant-supported restorations.



2:45 - 3:45 pm

Point-counterpoint III Zirconia Implants. A Real Alternative

Pro: Joan Pi-Anfruns, DMD

Contra: Katja Nelson, DDS, PhD

Upon completion of this presentation, participants should be able to: 1) describe the science behind ceramic implants; 2) list the advantages and disadvantages of ceramic implants compared to titanium implants; and 3) explain how to incorporate ceramic implants in your practice and attract new patients.



5:15 pm

Meeting Adjourns



Exhibitors

View the latest technological advances in the field of implant dentistry in the Exhibit Hall. Don't miss the latest products and services showcased by more than 50 companies on display throughout the meeting. Be sure to visit the exhibits and see the newest products to enhance your practice and improve patient care. The following is a list of exhibitors registered as of November 5, 2024.

- ACE Southern
- Accurate Mfg Inc.
- Align Technology
- Alpine Pharmaceuticals
- Anatotemp
- Aseptico Inc.
- Augma Biomaterials (USA) Inc.
- BIOLASE
- BQ Ergonomics LLC
- BioHorizons
- ClaroNav Inc.
- Cool Jaw by Medico
- Dental Tribune America
- Dentium USA
- Dentsply Sirona
- Designs for Vision, Inc.
- DoWell Dental Products, Inc.
- H & H Company
- Hiossen Inc
- Hu-FriedyGroup
- Impladent, Ltd.
- Implant Direct
- LumaDent Inc.
- MODIS Dental Partners
- Maxxeus
- MegaGen America
- Meisinger USA
- Millennium Dental Technologies, Inc.
- Neocis, Inc.
- Nobel Biocare USA
- Osteogene Tech Corp
- Osteogenics Biomedical
- Paragon Implant Company
- Pikos Institute
- Quintessence Publishing Co, Inc.
- RGP Dental
- Ritter Implants
- SDS Swiss Implant Systems, USA
- Salvin Dental Specialties, Inc.
- SigmaGraft, Inc.
- Smart Denture Conversions
- Southern Implants North America
- Specialized Dental Partners
- StellaLife, Inc.
- Straumann Group
- Suremark
- TruAbutment, Inc.
- Ultralight Optics, Inc.
- Versah, LLC
- W&H Impex, Inc.
- Weave
- X-Nav Technologies, LLC
- Xemax Surgical Products
- ZimVie
- Zircon Medical Management AG

Hotel Registration Information

Academy of Osseointegration Annual Meeting

March 27 - 29, 2025 • Seattle, Washington

Hyatt Regency Seattle Hotel

808 Howell Street
Seattle, WA 98101

\$269 Single/Double (+18% tax)

(Headquarters Hotel - 1/2 block from
Seattle Convention Center - Summit Building)



Sheraton Grand Seattle Hotel

1400 6th Avenue
Seattle, WA 98101

\$269 Single/Double (+18% tax)

(2 1/2 blocks from Seattle Convention Center -
Summit Building)

For best availability, make your reservation online at

Internet: <https://compass.onpeak.com/e/012607855>

Phone: 855-904-2787 (US & Canada)
312-527-7300 (International)
Mon. - Fri., 9:00 am - 5:30 pm ET



You can also contact AO housing via our support center by emailing AHotels@onpeaksupport.com.

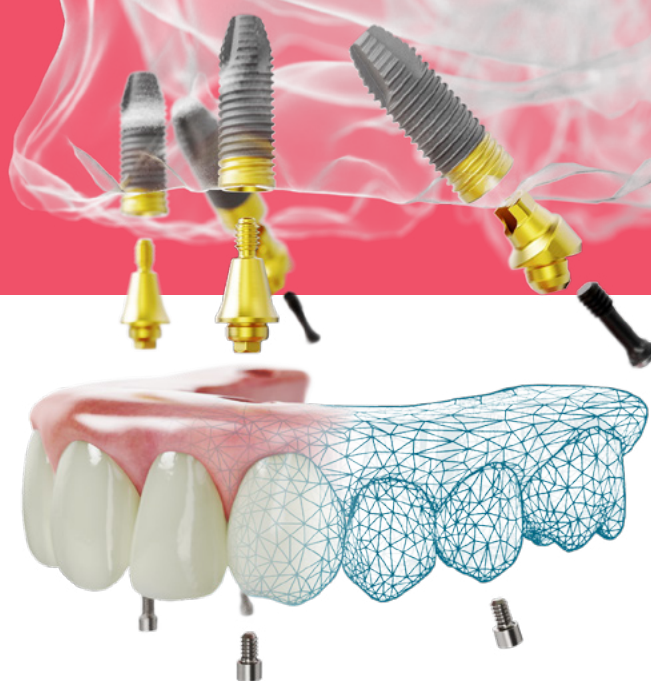
**Hotel reservations / rate availability are not guaranteed
after the room block is full or after Monday, February 24, 2025.**

Please register early - only a limited number of rooms are available.

A portion of the room rate will subsidize the cost of the meeting space rental.

WARNING! onPeak is the only official hotel provider associated with the AO Annual Meeting. We have received reports that other companies are posing as official travel vendors for the Annual Meeting and may contact you offering hotels for your trip. They are not endorsed by or affiliated with the show and entering into financial agreements with such companies is not advised.

DEADLINE FOR HOTEL RESERVATIONS IS MONDAY, FEBRUARY 24, 2025



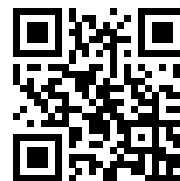
Leverage the All-on-4[®] digital workflow to save time and cost*

40% fewer patient visits

40% less chair time

35% lower lab fees per arch

For more information about our digital workflow solutions, visit our website nobelbiocare.com



Scan & Plan

Upfront 3D planning optimizes implant placement and prosthetic design, enabling the clinician to provide a patient-specific, highly personalized smile**

Navigate & Place

X-Guide[®] with FastMap[®] navigated photogrammetry allows for the creation of a conversion-less, CAD/CAM-produced, passive-fit provisional directly on implants/abutments

Design & Print

Passive fitting screw-retained provisional and final restoration from the first time,[†] increasing predictability and minimizing reworks for the clinician¹

Smile

Scan to individualized provisional in as little as 4 hours^{††}

nobelbiocare.com

* On average compared to conventional All-on-4[®] treatment concept based on clinicians' feedback.

**Using photogrammetry and pre-designed smile.

† While using photogrammetry.

††On average based on limited market survey.

1 Ma B, Yue X, Sun Y, Peng L, Geng W. Accuracy of photogrammetry, intraoral scanning, and conventional impression techniques for complete-arch implant rehabilitation: an in vitro comparative study. BMC Oral Heal. 2021;21(1):636.; REP189874_003

MKT-5863 Rev 00 (11/24 (GMT 93460)) © Nobel Biocare USA, LLC, 2024. All rights reserved. Disclaimer: Nobel Biocare, the Nobel Biocare logotype and all other trademarks are, if nothing else is stated or is evident from the context in a certain case, trademarks of Nobel Biocare. Please refer to nobelbiocare.com/trademarks for more information. Product images are not necessarily to scale. All product images are for illustration purposes only and may not be an exact representation of the product. Please contact the local Nobel Biocare sales office for current product assortment and availability. Caution: Federal (United States) law or the law in your jurisdiction may restrict this device to sale by or on the order of a dentist or physician. See Instructions For Use for full prescribing information, including indications, contraindications, warnings and precautions. X-Guide and FastMap are registered trademarks of X-Nav Technologies. X-Guide is manufactured by X-Nav Technologies, LLC (1555 Bustard Road Suite 75, Lansdale PA 19446, USA), and distributed by Nobel Biocare.

