

REGISTRATION PROGRAM



Academy of
Osseointegration

**GOING BEYOND
THE BOUNDARIES:**
Optimizing Patient Care
Through Scientific and
Clinical Innovation

**2024
ANNUAL
MEETING**



MARCH 7-9

Charlotte, North Carolina



World Class
Speakers



Cutting-edge
Research



Network
With Peers



ADA CERP
Credit

Register
online at
osseio.org



Greetings From the Program Chair

AO
2024
ANNUAL
MEETING



AO's 2024 Program Committee is delighted to invite you to attend the 2024 AO Annual Meeting, March 7-9 in Charlotte, NC.

The program, "Going Beyond the Boundaries: Optimizing Patient Care Through Scientific and Clinical Innovation" has been assembled with all the key stakeholders of the international implant dentistry community in mind, including practicing clinicians and support staff, allied health professionals, educators, researchers and students.

The committee has prioritized the inclusion of diverse, but relevant topics and evidence-based content that will be delivered by a stellar line-up of speakers to enrich our knowledge and foster a culture of inquiry with the ultimate goal of providing the best possible care to our patients in need of oral rehabilitation.

Thursday morning begins with the first of five Hands-on Workshops offered throughout the meeting with Dr. Giovanni Zucchelli's presentation on Peri-Implant Soft Tissue Augmentation while the popular Corporate Forums showcase the latest technologies. The meeting Opening Symposium kicks off Thursday afternoon with "Peri-implantitis: A Bacterial Disease or Something Else?" with our Keynote Speaker, Dr. Edward Schwarz, an orthopedic surgeon and researcher who will discuss "How to Prevent and Manage Peri-implantitis Using the Experience Gained From Treating Implant-associated Chronic Osteomyelitis." This session will be followed by the Welcome Reception in the Exhibit Hall giving you the chance to learn about the latest products and services while networking with friends and colleagues.

Friday morning starts with the popular Morning With the Masters sessions followed by the Surgical and Prosthetic Tracks which run concurrently all day. Additional Hands-on Workshops sessions are offered along with the Emerging Leaders Session where up-and-coming clinicians will present their cases in a bid to win "Best Presentation." The day will close with the President's Reception at the NASCAR Hall of Fame - an event you won't want to miss!

Saturday morning kicks off with "Management of Peri-implant Esthetic Complications" by some of the most reputed clinicians worldwide. Attend the "Lunch With the Masters" and learn directly from the experts in small round-table sessions. The meeting will close on a high note with "Prevent Implant Complications Through Meticulous Planning and Interdisciplinary Approaches."



We will also feature the Team Program for you and your office staff, as well as Abstract Sessions and the Young Clinicians' Luncheon to round out your educational opportunities.

We look forward to seeing you in Charlotte!

Gustavo Avila-Ortiz, DDS, MS, PhD
AO 2024 Annual Meeting Program Chair



Who should attend this meeting?

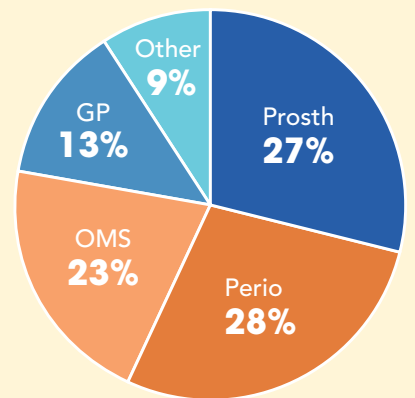
Anyone who has an interest in implant therapy including: students in training programs; dentists with limited experience, and specialists with extensive training. Dental office staff are also welcome and invited to attend our Team program on Saturday.

1,720 Average number of dental professionals attending AO's Annual Meeting

The Academy's 2024 Annual Meeting will offer:

- 5** Hands-on Workshops
- 34** World renowned presenters
- 65** Hours of Continuing Education Credits

Typical meeting registration by specialty:



Surgical Track



Prosthetic Track



Preventing Implant Complications

Table of Contents

General Information	AO-4	Emerging Leaders Session	AO-19
Education Information	AO-6	President's Reception	AO-20
Schedule-at-a-Glance	AO-7	Management of Peri-implant Esthetic Complications	AO-21
Hands-on Workshops	AO-8	Lunch With the Masters	AO-22
Corporate Forums	AO-11	Closing Symposium	AO-23
Opening Symposium	AO-12	Team Program	AO-24
Morning With the Masters	AO-13	Exhibitors	AO-26
Surgical Track	AO-15 & AO-17	Hotel Registration Information	AO-27
Prosthetic Track	AO-16 & AO-18		

General Information



LOCATION

The meeting will be held at the Charlotte Convention Center, located at 501 S. College Street, in Charlotte, NC.

REGISTRATION

The 2024 meeting is being offered in-person only. Attendees will have access to all recorded sessions to earn additional CE credit for up to four months following the live event. The recordings, however, will be available for viewing through December, 2024. The recorded sessions will only be available to people who register for the in-person meeting.

The Academy of Osseointegration designates this activity for both the live and recorded content for up to 65 ADA CERP continuing education credit hours.

Register before January 8, 2024 to take advantage of the early registration discount*.

*Non-Members: Become a member of the AO and take advantage of all of the benefits of membership including savings on your registration fees. Membership applications must be received at least two weeks before each deadline date to be considered for the discounted "member rate." To become a member, visit us online at www.osseo.org/become-a-member.

TEAM PROGRAM ATTENDEES

Anyone registering ONLY for the Saturday Team Program may pick up their registration materials at the Meeting Registration Desk in the Charlotte Convention Center beginning at 7:00 am on Saturday, March 9th. The Team Program registration fee includes lunch and access to the Exhibit Hall on Saturday.

ACTIVE DUTY MILITARY REGISTRATION DISCOUNT

Active duty military personnel from any country may receive the early registration rate but are encouraged to register early. After the early registration deadline of January 8, please contact the AO Registration office at registration@osseo.org or 847-439-1919 for instructions.

Military personnel must be in uniform and present a valid military ID in order to register for the early rate on-site.

COVID-19 HEALTH AND SAFETY

The safety and well-being of all Annual Meeting attendees and exhibitors is a top priority for the Academy. We are closely monitoring the situation related to COVID and plan to adhere to the Centers for Disease Control (CDC) guidelines, along with any federal, state and local government mandates in place at the time of our meeting.

The primary goal will be to maintain transparency and accurately convey the health and safety measures being taken at the Annual Meeting. As such, AO will communicate

what attendees can expect on-site in terms of safety mandates prior to the meeting based on current guidance.

The Academy will ensure hand sanitizing stations will be readily available and recommend all attendees:

- Receive an updated COVID-19 vaccination and if necessary, be tested prior to arrival;
- Bring their own PPE;
- Complete a "Self-Assessment" health checklist if symptoms occur; and
- Stay in their room if they are exhibiting any symptoms.

A First Aid Station will be staffed during show hours to provide assistance to any attendee who requires medical services.

The Academy will post any new protocols to the Annual Meeting website and all health and safety regulations are subject to change.

SPARK THE SOCIAL MEDIA CONVERSATION!

Start creating a buzz for the Academy's 2024 Annual Meeting by posting Annual Meeting related topics and messages to social media by using the hashtag #AO24Charlotte. When you're at the meeting, share your experiences and be sure to tag us on Instagram, Facebook and X @AcademyOsseo and also on YouTube and LinkedIn @Academy of Osseointegration.

OFFICIAL TRAVEL AGENCY

To book your airline reservation, call AO's official travel agency, Uniglobe Preferred Travel, at 1-800-235-9386 and after the prompt dial "0" (M-F 8:30 am - 7:00 pm CST). Attendees outside the U.S. please call 1-925-838-4445.

HOUSING INFORMATION

The convention hotels include the Westin Charlotte, Hilton Charlotte Uptown and Embassy Suites Charlotte Uptown hotels. All of these hotels are walking distance to the Charlotte Convention Center.

Hotel reservation must be made through onPeak, the official AO Housing Bureau, either online or by phone. A credit card guarantee is required. The hotels will not accept reservations directly.



Hotel Rates:

The Westin Charlotte Hotel

\$269 Single & \$289 Double
(+15.25% tax per room/per night)
(Headquarters Hotel - 1/2 block from Convention Center)

Hilton Charlotte Uptown Hotel

\$229 Single/Double
(+15.25% tax per room/per night)
(1½ blocks from Convention Center)

General Information



Embassy Suites Charlotte Uptown Hotel

\$239 Single/Double
(+15.25% tax per room/per night)
(1 block from Convention Center)

Register Online:

For best availability, make your reservation at:
<https://compass.onpeak.com/e/012606870>.

Register by Phone:

855-904-2787 (US & Canada)
312-527-7300 (International)
Mon. - Fri., 9:00 am - 5:30 pm ET

You can also contact AO housing via our support center by emailing AOhotels@onpeak.com.

**The deadline for hotel reservations is
Friday, February 2, 2024.**

Hotel reservations/rate availability are not guaranteed after the room block is full or after February 2, 2024. Please register early as only a limited number of rooms are available.

A portion of the room rate will subsidize the cost of the meeting space rental.

WARNING! onPeak is the only official hotel provider associated with the AO Annual Meeting. We have received reports that other companies are posing as official travel vendors for the Annual Meeting and may contact you offering hotels for your trip. They are not endorsed by or affiliated with the show and entering into financial agreements with such companies is not advised.

AIRPORT AND GROUND TRANSPORTATION

The Charlotte Douglas International Airport (CLT) is located 7 miles from the Charlotte Convention Center and a 15-minute drive. The estimated taxi fare is \$25-30 (one way).

TEMPERATURE

The average March temperature in Charlotte is a high of 64°F to a low of 51°F.

SPOUSE/GUEST PROGRAM

The Academy of Osseointegration is pleased to offer spouse and companion registration for your travel group. If you are planning to bring a guest (limit 2), please complete the "Spouse/Guest" portion of the registration form. The fee provides your guest with entry to the following:

- Thursday evening Welcome Reception
- Friday evening President's Reception; and
- Exhibit Hall (Thursday - Saturday)

Box lunches are available for purchase for your spouse/guests online and on the enclosed registration form through Friday, February 23.

Spouse/Guest registration is not eligible for ADA CERP or other educational credit.

Please register online
at www.osseo.org





CONTINUING EDUCATION CREDIT INFORMATION

ADA C.E.R.P.[®] | Continuing Education Recognition Program

The Academy of Osseointegration is an ADA CERP Recognized Provider. ADA CERP is a service of the American Dental Association to assist dental professionals in identifying quality providers of continuing dental education. ADA CERP does not approve or endorse individual courses or instructors, nor does it imply acceptance of credit hours by boards of dentistry. Concerns or complaints about a CE provider may be directed to the provider or to the Commission for Continuing Education Provider Recognition at ADA.org/CERP.

This continuing education activity has been planned and implemented in accordance with the standards of the ADA Continuing Education Recognition Program (ADA CERP). The Academy of Osseointegration designates this activity - in-person and on-demand content - for 65 continuing education credits.

All credit hours are subject to change.

Credit is awarded and based on actual number of contact hours, excluding Corporate Forum presentations, breaks,

meals and registration periods. Attendees may claim fewer hours in accordance with their actual attendance. (CE credits are earned by attending all scientific sessions except for the Corporate Forums.) The current term of acceptance extends from 11/1/2022 - 12/31/2026.

The formal continuing education program for the Academy of Osseointegration is accepted by the Academy of General Dentistry (Recognition #145608) for Fellowship/ Mastership credit.

The Academy of Osseointegration is also a recognized continuing education provider for the Dental Board of California (RP 3090).

The Academy of Osseointegration is the sole provider of continuing education and is responsible for the program content and faculty selection. The Academy assures that all continuing education presentations are independent of commercial influences. In addition, the Academy of Osseointegration ensures that the scientific basis for clinical and technical CE content is presented in each course through a peer-review process. Speakers are also required to provide an assessment of the benefits and risks associated with any clinical recommendations or treatment options presented.



Schedule-at-a-Glance



WEDNESDAY, MARCH 6

3:00 – 6:00 pm
Registration

THURSDAY, MARCH 7

6:30 am – 6:00 pm
Registration

8:00 am – noon
**HOW-1: Correction of
Soft Tissue Deformities
Around Dental Implants**

8:00 am – noon
Corporate Forum Presentations

11:45 am – 7:15 pm
Exhibit Hours

Noon – 1:00 pm
**Complimentary Lunch in the
Exhibit Hall**

12:10 – 1:00 pm
**ePoster Presentations in the
Exhibit Hall**

1:00 – 5:00 pm
**HOW-2: Digital Planning of
Implant Therapy**

1:00 – 1:30 pm
Welcome and Opening Remarks

1:30 – 5:45 pm
**Opening Symposium:
Peri-implantitis: A Microbial
Disease or Something Else?**

5:45 – 7:15 pm
**Welcome Reception and ePoster
Presentations in the Exhibit Hall**

7:30 – 9:30 pm
Young Clinicians' Reception

FRIDAY, MARCH 8

6:30 am – 4:00 pm
Registration

7:00 – 8:00 am
Morning With the Masters

8:00 am – noon
**HOW-3: Implant
Provisionalization in the
Esthetic Zone**

8:00 am – noon
**Oral Clinical Research
Abstract Presentations**

8:15 am – 5:15 pm
Surgical Track

8:15 am – 5:15 pm
Prosthetic Track

9:30 am – 4:00 pm
Exhibit Hours

Noon – 1:30 pm
**Complimentary Lunch and
ePoster Presentations in
Exhibit Hall**

Noon – 1:30 pm
Young Clinicians' Luncheon

12:30 – 3:45 pm
**HOW-4: Vertical Bone
Augmentation**

1:30 – 5:10 pm
**Oral Scientific Research
Abstract Presentations**

1:30 – 5:15 pm
Clinical Innovations Presentations

5:15 – 6:00 pm
Emerging Leaders Session

7:00 – 9:00 pm
**President's Reception at the
NASCAR Hall of Fame**

SATURDAY, MARCH 9

7:00 am – 3:00 pm
Registration

8:00 am – noon
**HOW-5: Surgical Management of
Peri-implant Diseases**

8:00 am – 4:00 pm
Team Program

8:15 am – noon
**Management of Peri-implant
Esthetic Complications**

9:30 am – 2:00 pm
Exhibit Hours

Noon – 1:30 pm
**Complimentary Lunch in the
Exhibit Hall**

Noon – 1:30 pm
Lunch With the Masters

1:30 – 2:00 pm
**Award Ceremony and
Annual Business Meeting**

2:00 – 5:00 pm
**Closing Symposium:
Prevent Implant Complications
Through Meticulous Planning and
Multi-discipline Approaches**

QUESTIONS?

Contact the AO Executive Office
85 W. Algonquin Rd., Suite 550
Arlington Heights, IL 60005
Phone: (800) 656-7736 or
(847) 439-1919
E-mail: academy@osseo.org
Website: osseo.org



All Hands-on Workshop Sessions will be conducted during the Annual Meeting.

Members: \$550 per session – Non-Members: \$700 per session

Participants do not need to register for the Annual Meeting to enroll in the Hands-on Workshops.

Admission by ticket only • Attendance is limited • Pre-registration is required. On-site registration will not be permitted.

Please register online at www.osseo.org.

Please note: Hands-on Workshops will NOT be recorded for on-demand viewing.

Each session will provide registrants the opportunity to put their skills to practice using hands-on materials. Materials will vary for each session and are described below.

HOW-1

8:00 am – noon

Correction of Soft Tissue Deformities Around Dental Implants

Giovanni Zucchelli, DDS, PhD



Soft tissue plastic approaches to increase the height of the keratinized mucosa and/or the thickness of the peri-implant soft tissues can be performed at three different stages: before implant placement, simultaneously with implant placement and after implant placement.

After implant insertion, especially in the mandible, it is common to face clinical scenarios in which there is complete absence or a minimal quantity of keratinized tissue, as many times this is associated with a reduced depth of the vestibular fornix and a coronal muscle insertion. In these cases where there are no esthetic demands, the main objective is to reconstruct/increase the quantity of keratinized mucosa and deepen the vestibule so as to facilitate the performance of oral hygiene by the patient and at the same time reduce the risk of soft tissue dehiscence. The most appropriate surgical technique to obtain those results is the free gingival graft.

Most of the time, soft tissue deficiencies at the buccal aspect of implant-supported crowns are a matter of thickness rather than height. The lack of adequate thickness of the buccal soft tissues can lead to incorrect emergence profiles of the prosthetic crown, which are difficult to maintain from a hygienic point of view. In these cases, the main goal of plastic surgery is not to increase the height of the keratinized tissues but to augment the thickness of the connective tissue at the level of the peri-implant transmucosal portion. This is achieved with a surgical technique that involves the use of a connective tissue graft covered by a coronally advanced flap.

Upon completion of this presentation, participants should be able to: 1) describe step-by-step how the free gingival graft procedure can increase keratinized mucosa height before or after implant placement; 2) describe the surgical procedure combining transmucosal implant placement and simultaneous submarginal connective tissue graft or collagen matrix; and 3) describe step-by-step how to use the harvesting technique.

HOW-2

1:00 – 5:00 pm

Digital Planning of Implant Therapy

Mark Ludlow, DMD, MS



Time tested experience has shown that the best dental implant outcomes are the result of combined surgical and restorative planning. This course will take you step by step through the use of computer guided planning using implant planning software, guided surgery modalities, and intraoral scanner use. You'll further learn about CBCT scanning and how to merge these with intraoral scans to make an ideal 'model' for implant planning. You will then explore how to place dental implants in their ideal positions and how to achieve excellent restorations on these implants. The session will be devoted to hands-on experience of every facet of the implant experience from the planning to the surgery to the restorative aspects to help you solidify the concepts for use in your daily practice.

Upon completion of this presentation, participants should be able to: 1) review how the gingiva, bone, fixture, and restoration interface to harmoniously create idealized implant esthetics and transfer those principles to implant planning software to create a surgical plan; 2) discuss model-based guided surgery in the anterior region utilizing a custom healing abutment; and 3) describe how to utilize intraoral scans using scan body techniques.

10:00 – 10:30 am
Refreshment Break

3:00 – 3:30 pm
Refreshment Break

Please register online
at www.osseo.org





All Hands-on Workshop Sessions will be conducted during the Annual Meeting.

Members: \$550 per session - Non-Members: \$700 per session

Participants do not need to register for the Annual Meeting to enroll in the Hands-on Workshops.

Admission by ticket only • Attendance is limited • Pre-registration is required. On-site registration will not be permitted.

Please register online at www.osseo.org.

Please note: Hands-on Workshops will NOT be recorded for on-demand viewing.

Each session will provide registrants the opportunity to put their skills to practice using hands-on materials. Materials will vary for each session and are described below.

HOW-3

8:00 am - noon

Implant Provisionalization in the Esthetic Zone

Oscar Gonzalez-Martin, DDS



For natural appearance of implant-supported prostheses placed in aesthetic areas, the preservation and/or reconstruction of the tissue volume is crucial in many instances. Soft tissue, bone, or combined augmentation may try to reduce alveolar ridge defects and enhance the alveolar contour at the edentulous segment. However, while adequate tissue volume around anterior implants is a key to aesthetic success, proper management of the provisional and definitive restoration are of paramount importance to obtain optimal esthetic results.

In this hands-on session, fundamental concepts for subgingival abutment design and the role of the critical and subcritical contour to sculpt the peri-implant soft tissues, including the mucosal margin level, architecture and color, will be described step-by-step.

Upon completion of this presentation, participants should be able to: 1) review current techniques to optimize esthetic results in implant dentistry; 2) discuss different protocols to fabricate an immediate provisional restoration in the esthetic zone; and 3) discuss the concepts of the critical and subcritical contour and the role of provisional modifications in the final appearance of the peri-implant soft tissues.

10:00 - 10:30 am
Refreshment Break

Please register online
at www.osseo.org

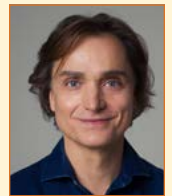


HOW-4

12:30 - 3:45 pm

Vertical Bone Augmentation

Istvan Urban, MD, DMD, PhD



Vertical and horizontal augmentation presents one of the greatest challenges of bone regeneration in implant dentistry. This is primarily due to the difficulty of the surgical procedure and its potential complications.

These complications include post-surgical swelling, bruising, and potential neurosensory disturbances. Minimally invasive flap management that can minimize the chances of these complications will be revealed during this hands-on course. Graft harvesting, membrane fixation for vertical augmentation as well as for the Sausage Technique TM will be practiced. A step-by-step approach how to protect the neurovascular bundles such as the mental nerve and how to achieve a safe, tension-free closure will be discussed during this practical course.

Upon completion of this presentation, participants should be able to: 1) indicate the surgical anatomy of the floor of the mouth; 2) list the surgical principles of ridge augmentation surgery; and 3) describe the tension free closure of the flaps after vertical ridge augmentation.





All Hands-on Workshop Sessions will be conducted during the Annual Meeting.

Members: \$550 per session - Non-Members: \$700 per session

Participants do not need to register for the Annual Meeting to enroll in the Hands-on Workshops.

Admission by ticket only • Attendance is limited • Pre-registration is required. On-site registration will not be permitted.

Please register online at www.osseo.org.

Please note: Hands-on Workshops will NOT be recorded for on-demand viewing.

Each session will provide registrants the opportunity to put their skills to practice using hands-on materials. Materials will vary for each session and are described below.

HOW-5

8:00 am - noon

Surgical Management of Peri-implant Diseases



Shih-Chang Tseng, DDS

Shih-Cheng Wen, DDS

This workshop is designed to help dentists manage peri-implantitis with higher predictability, less trauma and therefore increase both the dentist's confidence and patient's acceptance when dealing with peri-implantitis. Participants will learn the principles and techniques to provide more predictability and less trauma for their patients in the management of peri-implantitis.

Upon completion of this presentation, participants should be able to: 1) discuss the principles and procedures for detoxification and decontamination for implant surfaces, including laser, sand - blast, implantoplasty etc.; 2) explain the procedures for procuring the horizontal and vertical bone augmentation to rebuild marginal bone loss; and 3) describe the principles and rationale for procuring autogenous free gingival graft (FGG) and connective tissue graft (CTG) to increase keratinized mucosa and modified phenotype.



10:00 - 10:30 am
Refreshment Break

Please register online at www.osseo.org





8:00 am - noon

NOT FOR CREDIT

Corporate Forum sessions are open to all Annual Meeting attendees at no charge.

This collection of presentations offers a unique and significant opportunity to view the latest research and developments in the field of craniofacial implant technology. The Academy offers industry-hosted presentations featuring the latest implant technology. Registrants may attend any presentation with the option of changing rooms at any time.

The topics and presenters are selected by the participating companies without any input from the Academy of Osseointegration.

Please note: Select Corporate Forums will be recorded for on-demand viewing.

Participating companies include:



8:00 am - noon
Hands-on Workshop #1
Correction of Soft Tissue Deformities
Around Dental Implants
Giovanni Zucchelli, DDS, PhD
See page AO-8 for full description.

11:45 am - 7:15 pm
Exhibit Hours

Noon - 1:00 pm
Complimentary Lunch
in the Exhibit Hall

Noon - 1:00 pm
ePoster Presentations
in the Exhibit Hall



1:00 - 1:30 pm

Welcome and Opening Remarks

Hom-Lay Wang, DMD, MSD, PhD
President

Gustavo Avila-Ortiz, DDS, MS, PhD
Annual Meeting Program Chair



Dr. Wang



Dr. Avila-Ortiz

1:30 - 5:45 pm

Peri-implantitis: A Microbial Disease or Something Else?

Supported by a grant from the R. Gilbert Triplett Osseointegration Foundation Research and Education Fund.

Moderator: Gustavo Avila-Ortiz, DDS, MS, PhD

KEYNOTE SPEAKER

1:30 - 2:15 pm

How to Prevent and Manage Peri-implantitis Using the Experience Gained From Treating Implant-associated Chronic Osteomyelitis



Edward Schwarz, PhD

*Director, Center for Musculoskeletal Research
University of Rochester Medical Center*

Upon completion of this presentation, participants should be able to: 1) recognize the four distinct *S. aureus* biofilms that exist in chronic bone infections; 2) explain why standard of care antibiotics including high-dose antibiotic loaded bone cement cannot irradiate bacteria within osteocyte lacuno-canalicular networks (OLCN); and 3) discuss the immune proteome against *S. aureus* and how it affects infection severity and clinical outcomes.

3:45 - 4:25 pm

Immune Etiology

Tomas Albrektsson, MD, PhD



Upon completion of this presentation, participants should be able to: 1) describe how osseointegration, as well as perturbation of osseointegration, depends on the immune system; 2) explain how the immune system protects against bacterial attacks; and 3) discuss how combined factors may attack osseointegration causing mbl and how we are unaware of the individual importance of each one of these factors.

4:25 - 5:05 pm

Metallosis and Peri-implant Diseases

Thomas Wilson, Jr., DDS, PA



Upon completion of this presentation, participants should be able to: 1) define the term "metallosis;" 2) identify those factors that produce metallosis; and 3) describe the current state of this process.

2:15 - 3:00 pm

Microbial Etiology

Purnima Kumar, DDS, PhD



Upon completion of this presentation, participants should be able to: 1) discuss the importance of treating peri-implant diseases as not just an infection; 2) explore peri-implant mucositis as a precursor of irreversible tissue damage; and 3) describe biologically validated methods to manage peri-implant diseases.

5:05 - 5:45 pm

Prosthodontic Considerations to Prevent Peri-implant Disease

German Gallucci, DMD, PhD



Upon completion of this presentation, participants should be able to: 1) evaluate the evidence for the corresponding implant prosthodontic design factors on the risk to peri-implant tissue health; 2) identify key treatment factors for sustainable success; and 3) describe the ideal implant-prosthetic design to prevent peri-implant diseases.

1:00 - 5:00 pm

Hands-on Workshop #2

Digital Planning of Implant Therapy

Mark Ludlow, DMD, MS

See page AO-8 for full description.

5:45 - 7:15 pm

Welcome Reception and ePoster Presentations in the Exhibit Hall

3:00 - 3:45 pm

Refreshment Break in the Exhibit Hall

7:30 - 9:30 pm

Young Clinicians' Reception



7:00 – 8:00 am

Members: \$150 - Non-Members: \$175**Admission by ticket only • Attendance is limited***Please register online at www.osseo.org.***All Morning With the Masters presentations run concurrently and will NOT be recorded for on-demand viewing.****M-1****Long-term Implant Stability in the Maxillary Anterior Implant****Ueli Grunder, DMD**

Lack of soft tissue is the most common reason for esthetic failure of implants in the esthetic zone. We have learned that a bony foundation must support the soft tissue. Consequently, in cases with larger tissue defects, both bone and soft tissue augmentation is necessary. The technique used for these abutments has a significant effect on the long-term result. However, it is still unclear how the newly obtained tissues will behave in the long term. Techniques to achieve the best possible outcome and how the cases perform over several decades will be discussed based on many clinical cases.

Upon completion of this presentation, participants should be able to: 1) explain why bone and soft tissue augmentations are usually necessary; 2) discuss how to avoid surgical mistakes during bone augmentation; and 3) decide which soft tissue augmentation technique should be used and when.

M-2**Management of Implant Prosthetic Complications****Stephen Chu, DMD, MSD, CDT**

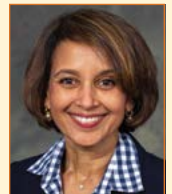
Prosthetic implant-related complications can be many with complex factors. However, implant restorative emergence profile (IREP) and contour are critical factors related to not only esthetic success or demise, but also implant health and caries risk. An in-depth discussion of IREP as it relates to the risk and prevalence of peri-implantitis and caries risk will be outlined through research and clinical examples.

Upon completion of this presentation, participants should be able to: 1) determine the risk of increasing prosthetic emergence angle and the risk of peri-implantitis; 2) list the consequences of facially angulated implants and the risk of mid-facial gingival recession; and 3) assess the risk of interproximal caries risk with increasing tooth to implant distance in molar sites.

M-3**My Perspectives on Vertical and Horizontal Augmentation****Istvan Urban, MD, DMD, PhD**

Vertical and horizontal augmentation presents one of the greatest challenges of bone regeneration in implant dentistry. This is primarily due to the difficulty of the surgical procedure and its potential complications. However, it has been demonstrated that successful clinical outcomes can be predictably achievable when strict protocols are followed. The detailed understanding of clinical anatomy should guide the clinician when managing the soft tissue flaps in an attempt to securely close the flaps to achieve optimal healing environment of the graft. Graft immobilizations, the optimal use of graft materials are essential in achieving bone formation even in a distance from the bony walls. This presentation will summarize the essential steps of ridge augmentation and give an insight into how a clinician can learn these demanding procedures.

Upon completion of this presentation, participants should be able to: 1) list the surgical protocols in bone augmentation; 2) describe how to securely close the soft tissue flaps for optimal healing; and 3) discuss the best methods for the clinician in learning these augmentation procedures.

M-4**Management of Peri-implant Disease****Purnima Kumar, DDS, PhD**

Dental implants replace missing teeth in at least 100 million people, yet over one million implants fail every year due to peri-implantitis, a bacterially induced inflammatory disease. Our ability to treat peri-implantitis using biologically validated methods has led to 100% recurrence rate for the disease. This presentation will discuss how we can harness biological mechanisms to increase therapeutic success.

Upon completion of this presentation, participants should be able to: 1) describe the molecular etiology of peri-implant diseases; 2) examine the efficacy of different treatment modalities using a biological lens; and 3) recognize critical periods of intervention in the management of peri-implant diseases.)



7:00 - 8:00 am

Members: \$150 - Non-Members: \$175

Admission by ticket only • Attendance is limited

Please register online at www.osseo.org.

All Morning With the Masters presentations run concurrently and will NOT be recorded for on-demand viewing.

M-5

Sinus Augmentation

Pablo Galindo-Moreno, DDS, PhD



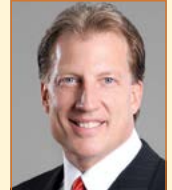
This presentation will focus on optimizing the lateral access technique to the maxillary sinus and enhancing our clinical outcomes with clinical details that improve treatment predictability, such as the surgical lateral window creation, proper management of the Schneiderian membrane, and correct handling of biomaterial within the maxillary sinus.

Upon completion of this presentation, participants should be able to: 1) discuss how to optimize the surgical approach technique; 2) describe the importance of preserving the Schneiderian membrane; and 3) identify the suitable biomaterial for these types of techniques.

M-6

Long Versus Short Implants

Craig Misch, DDS, MDS



Sufficient bone quantity for implant placement may be compromised following tooth loss and bone resorption. Bone grafting is often required to place an adequate number of dental implants in ideal positions for prosthetic support. Inherent disadvantages of bone grafting techniques include increase morbidity, surgical time, costs and treatment length. As such, an evolving trend has developed towards treatment approaches that avoid bone grafting including shorter and narrower implants, angled implants and/or fewer implants for prosthetic support. Growing data and evidence suggest that short implants can be an effective alternative to vertical bone augmentation for placing longer implants.

Upon completion of this presentation, participants should be able to: 1) describe clinical scenarios where short implants are preferred; 2) explain the mechanics of crown-to-implant ratio; and 3) discuss indications for splinting short implants.



8:00 am - noon

Oral Clinical Research Abstract Presentations

9:30 am - 4:00 pm

Exhibit Hours

8:00 am - noon

Hands-on Workshop #3

Implant Provisionalization in the Esthetic Zone

Oscar Gonzalez-Martin, DDS

See page AO-9 for full description.

Please register online
at www.osseo.org





8:15 am – noon

Surgical Management of Peri-implant Diseases and Conditions

Moderators: Hom-Lay Wang, DMD, MSD, PhD and Sandra Stuhr, DMD, MS

8:15 – 9:00 am

Mucogingival Approaches for the Management of Peri-implant Disease

Mario Rocuzzo, DDS



Upon completion of this presentation, participants should be able to: 1) recognize the importance of peri-implant soft tissues for long-term success; 2) determine the situations where soft tissue grating is indicated; and 3) select between CTG and FG for the treatment of mucositis and peri-implantitis.

9:00 – 9:45 am

Implantoplasty in the Surgical Treatment of Peri-implantitis

Paul Rosen, DMD, MS



Upon completion of this presentation, participants should be able to: 1) recognize the benefits of using resection for managing peri-implantitis; 2) identify the potential limitations to using a resective approach; and 3) discuss the role that implantoplasty plays in surface decontamination.

10:30 – 11:15 am

Regenerative Approach for the Management of Peri-implantitis

Istvan Urban, MD, DMD, PhD



11:15 am – noon

Management of Peri-implant Deformities Leveraging Soft Tissue Augmentation

Iñaki Gamborena, DMD, MSD



Upon completion of this presentation, participants should be able to: 1) compare treatment of difficult implant recession versus simple cases; 2) discuss the importance of CTG around implants for long-term results; and 3) identify techniques and tools to ensure predictable surgical and prosthetic results.



Noon – 1:30 pm
Complimentary Lunch and ePoster Presentations
in the Exhibit Hall

Noon – 1:30 pm
Young Clinicians' Luncheon

12:30 – 3:45 pm
Hands-on Workshop #4
Vertical Bone Augmentation
Istvan Urban, MD, DMD, PhD
See page AO-9 for full description.

9:45 – 10:30 am
Refreshment Break in the Exhibit Hall

Please register online
at www.osseo.org





8:15 am - noon

Management of Implant Prosthetic Complications

Moderator: Robert Vogel, DDS

8:15 - 9:00 am

Management of Common Implant Prosthetic Complications

Shih-Cheng Wen, DDS



Upon completion of this presentation, participants should be able to: 1) describe how to best prevent implant prosthetic complications; 2) discuss how to manage complications such as chipping/fracture of porcelain, loose or broken screw and loose or fractured abutment; and 3) explain how to best correct an implant fixture connection.

9:00 - 9:45 am

Prosthetic and Biological Complications: Assessing Implant Health

Chandur Wadhvani, MSD

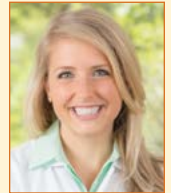


Upon completion of this presentation, participants should be able to: 1) explain why screw retention is always preferred over implant crown cementation - although both can present major issues; 2) describe how to be more effective at prevention of screw loosening and controlling some of the factors; and 3) discuss clinical aspects of determining dental implant health- what to monitor and what instruments should be avoided.

10:30 - 11:15 am

Management of Single-tooth Implant Prosthetic Nightmares

Julie Mitchell, DMD, MS



Upon completion of this presentation, participants should be able to: 1) discuss reasonable timelines and expectations for single implant esthetic improvement in cases of previously-placed implants; 2) present a patient with interdisciplinary treatment options to maximize esthetic success, including orthodontics, periodontics, and facial esthetics; and 3) describe the limitations of periodontal plastic surgery in managing peri-implant soft tissue defects (PSTD).

11:15 am - noon

Planning and Executing Complex Prosthetic Rehabilitations

Stephen Chu, DMD, MSD, CDT



Upon completion of this presentation, participants should be able to: 1) determine when FP1 restorations are appropriate and should be used; 2) describe the risks of peri-implantitis on susceptible patients; and 3) recognize when 'jaw tabling' can be used.

9:45 - 10:30 am
Refreshment Break in the Exhibit Hall

Noon - 1:30 pm
Complimentary Lunch and ePoster Presentations in the Exhibit Hall

Noon - 1:30 pm
Young Clinicians' Luncheon

12:30 - 3:45 pm
Hands-on Workshop #4
Vertical Bone Augmentation
Istvan Urban, MD, DMD, PhD
See page AO-9 for full description.

Please register online at www.osseo.org





1:30 - 5:15 pm

Current Trends for Predictable Bone Augmentation

Moderator: Joerg Neugebauer, DDS, PhD

1:30 - 2:15 pm

Strategies for Predictable Horizontal Bone Augmentation

Craig Misch, DDS, MDS

Upon completion of this presentation, participants should be able to: 1) identify minimum ridge width dimension for implant placement; 2) discuss the options for horizontal bone augmentation; and 3) apply techniques and materials based on required bone gains for implant placement.



3:45 - 4:30 pm

Strategies for Predictable Maxillary Sinus Floor Augmentation

Pablo Galindo-Moreno, DDS, PhD

Upon completion of this presentation, participants should be able to: 1) determine which maxillary sinus elevation techniques are safer; 2) explain clinical variations that enhance predictability and reduce complications; and 3) describe how biomaterials behave within the maxillary sinus and their kinetics of bone formation.



2:15 - 3:00 pm

Strategies for Predictable Vertical Bone Augmentation

Bach Le, DDS, MD

Upon completion of this presentation, participants should be able to: 1) discuss the methods for vertical bone augmentation in the anterior maxilla; 2) describe the limitations of augmentation and implant replacement of multiple missing teeth in the esthetic zone; and 3) identify surgical approaches to prepare the anterior maxilla for the prosthetic solution to defect management.



4:30 - 5:15 pm

Strategies for Predictable Bone Augmentation Leveraging Tissue Engineering Strategies

Darnell Kaigler, DDS, PhD

Upon completion of this presentation, participants should be able to: 1) explain the scientific and clinical rationale of using tissue engineering for bone regeneration; 2) identify clinical applications for tissue engineering approaches for regeneration of periodontal, peri-implant, and alveolar bone tissues; and 3) discuss the key parameters for the advancement of tissue engineering approaches into clinical practice treatment protocols.



3:00 - 3:45 pm

Refreshment Break in the Exhibit Hall

Please register online at www.osseo.org



7:00 - 9:00 pm

President's Reception at the NASCAR Hall of Fame

See page AO-20 for details.



1:30 - 5:15 pm

Tissue Regeneration – Implant Prosthetic Design for the Future

Moderator: *Jacinthe Paquette, DDS*

1:30 - 2:15 pm

Current Controversies in Implant Rehabilitation

Masahiko Kanenari, DDS



Upon completion of this presentation, participants should be able to: 1) explain the current controversies surrounding implant rehabilitation; 2) describe what the peri-implant tissue should be like; 3) discuss the advantages and disadvantages of cement versus screw retained.

3:45 - 4:30 pm

Material Selection in Single-unit or Short-span Implant Prostheses

Todd Schoenbaum, DDS, MS



Upon completion of this presentation, participants should be able to: 1) select abutment and prosthesis materials based on site-specific considerations; 2) discuss biological, functional, and aesthetic rationales and the science of implant prostheses; and 3) describe recent developments in implant restorations.

2:15 - 3:00 pm

Challenges in Contemporary Implant Prosthodontics

Mark Ludlow, DMD, MS



Upon completion of this presentation, participants should be able to: 1) explain the fundamental differences between digital and analog workflows along with the pain points/complications of each; 2) discuss the latest milled and printed materials and their applications in implant dentistry; and 3) identify the latest controversial topics in implant dentistry and understand how they influence daily patient care.

4:30 - 5:15 pm

Full-arch Rehabilitation: Removable Versus Fixed

Tiziano Testori, MD, DDS MSc



Upon completion of this presentation, participants should be able to: 1) identify predictable clinical indications; 2) describe the pre-prosthetic diagnostic phase; and 3) explain how to improve the practice by means of efficient procedures.



1:30 - 5:10 pm
Oral Scientific Research Abstract Presentations

1:30 - 5:15 pm
Clinical Innovations Presentations

3:00 - 3:45 pm
Refreshment Break in the Exhibit Hall

5:15 - 6:00 pm
Emerging Leaders Session
See page AO-19 for details and information on how to apply.



Academy of
Osseointegration

**GOING BEYOND
THE BOUNDARIES:**
Optimizing Patient Care
Through Scientific and
Clinical Innovation

MARCH 7-9
Charlotte, NC

2024
ANNUAL
MEETING



Emerging Leaders Case Presentation Competition

5 Under 10 – Short Talks from Early Career Clinicians

The **Emerging Leaders Case Presentation Competition** is an opportunity for early career clinicians to present at AO’s 2024 Annual Meeting. Five clinical cases will be selected from all submissions providing an opportunity for clinicians with less than 10 years in practice to present their cases on the main podium in the Emerging Leaders Session on Friday afternoon. Judges will identify the “Best in Case” presentation and announce the recipient during Saturday’s Business Meeting.

Applicants must:

- Be an AO member and under 40 years of age, or in practice for less than 10 years;
- Provide a complete case that is surgical, restorative or a combination of both;
- Submit a 1-minute video describing the case;
- Complete the online application - including the \$125 application fee - **no later than January 5, 2024.**
- If selected, the presenter must register for the 2024 Annual Meeting and present their clinical case in-person on Friday, March 8th.

Winners will receive a plaque and complimentary meeting registration to the 2025 AO Annual Meeting.



For additional details, please visit
osseointegration.org/emerging-leaders



FRIDAY, MARCH 8

President's Reception

AO
2024
ANNUAL
MEETING

All Annual Meeting registrants are invited to attend the complimentary

President's Reception at the NASCAR Hall of Fame

7:00 - 9:00 pm, Friday

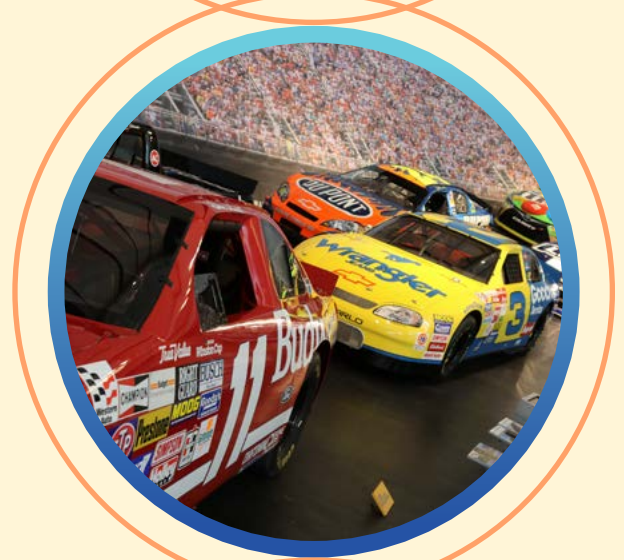
Exclusively for meeting attendees and their registered guests

The NASCAR Hall of Fame will set the stage for the Academy's 2024 President's Reception. Located next to the Charlotte Convention Center, this event, held on Friday, March 8, is a two-hour networking social event, complimentary with your Annual Meeting registration. Admission to the NASCAR Hall of Fame, hors d'oeuvres and cocktails are all included.

In addition to exhibits about the history of NASCAR racing and exclusive artifacts, is an array of interactive stations that will enthrall race fans and non-race fans alike to experience the thrill of racing. Have you ever wondered what it's like to broadcast a live NASCAR race, call a race from the booth or be a play-by-play announcer in the turns for the MRN crew? Here's your chance to find out. Test your speed at jacking up a car, changing a tire with a real airgun and filling up a fuel tank. Challenge your friends to a head-to-head competition, compete in teams or complete an entire pit stop by yourself.

Leave your colleagues in the dust with realistic racing simulators, walk along "Glory Road" and see the iconic cars that dominated the sport and so much more.

So get "revved up" for another event that no meeting attendees will want to miss!



Management of Peri-implant Esthetic Complications



8:15 am – noon

Moderator: Darnell Kaigler, DDS, PhD

8:15 – 9:00 am

Peri-implant Soft Tissue Dehiscences: Classification and Treatment

Giovanni Zucchelli, DDS, PhD



Upon completion of this presentation, participants should be able to: 1) describe a new classification for the peri-implant soft tissues defects; 2) discuss the possible treatment approaches; and 3) explain the long-term results in the soft tissue dehiscence coverage.

9:00 – 9:45 am

State-of-the-Art Management of Peri-implant Soft Tissue Deformities

Ueli Grunder, DMD



Upon completion of this presentation, participants should be able to: 1) determine which treatment is most important when a soft tissue graft does not heal; 2) select which treatment is most promising for severe peri-implantitis in the esthetic zone; and 3) describe how to eliminate different type of scar tissue.

10:30 – 11:15 am

Implants in the Esthetic Zone: Risks, Complications, and Solutions

Oscar Gonzalez-Martin, DDS



Upon completion of this presentation, participants should be able to: 1) explain how to solve implant-related aesthetic problems in the anterior zone; 2) review interdisciplinary alternatives to successfully correct the detrimental consequences of implant therapy in the esthetic area; and 3) present the value of critical and subcritical contour concept.

11:15 am – noon

Multi-disciplinary Approaches for Management of Peri-implantitis

Ausra Ramanauskaite, DMD, PhD



Upon completion of this presentation, participants should be able to: 1) list the treatment steps of a surgical peri-implantitis therapy; 2) recognize the factors according to which surgical approaches should be selected; and 3) explain the role of the peri-implant soft tissue characteristics upon the surgical treatment outcomes.



8:00 am – noon

Hands-on Workshop #5

Surgical Management of Peri-implant Diseases

Shih-Chang Tseng, DDS and Shih-Cheng Wen, DDS

See page AO-10 for full description.

9:30 am – 2:00 pm

Exhibit Hours

9:45 – 10:30 am

Refreshment Break in the Exhibit Hall

Noon – 1:30 pm

Complimentary Lunch in the Exhibit Hall

Please register online at www.osseo.org



Noon - 1:30 pm

Members: \$150 - Non-Members: \$175 • Admission by ticket only • Attendance is limited*Please register online at www.osseo.org.***All Lunch With the Masters presentations run concurrently and will NOT be recorded for on-demand viewing.**

These roundtable sessions will facilitate interaction between colleagues and experts in the field of implant dentistry. This small group setting offers the opportunity to delve into specific topics in a more intimate discussion-style format while enjoying lunch with colleagues. Attendees are encouraged to bring cases to share with their group.

LM-1**Use of Lasers in Implant Therapy****Hector Sarmiento, DMD, MSc**

Upon completion of this presentation, participants should be able to: 1) explain the mechanism of action, and laser-specific factors that can result in different clinical outcomes for surface detoxification; 2) discuss the limitations of lasers during the surgical management of peri-implantitis; and 3) list the benefits of lasers when attempting to regenerate tissues in the presence of peri-implant diseases.

LM-2**Microsurgery Applications in Implant Surgery****Hsun-Liang Chan, DDS, MS**

Upon completion of this presentation, participants should be able to: 1) list the distinct advantages of the operating microscope for implant surgery; 2) identify the current challenges of treating peri-implantitis; and 3) discuss the new information on wound healing of peri-implant tissues.

LM-3**Pathophysiology of Peri-implant Diseases: The Systemic Link****Sukirth Ganesan, DDS**

Upon completion of this presentation, participants should be able to: 1) describe the Molecular Foundations: acquire a comprehensive understanding of the molecular mechanisms underlying peri-implant disease; 2) apply Multi-Omics Techniques: Explore how the utilization of multi-omics approaches, including microbiomics, host transcriptomics, and imaging modalities, can illuminate these intricate processes; and 3) translate Research into Clinical Application: Discover how to leverage multi-omics data to identify biomarkers, guide personalized treatment strategies, and improve peri-implantitis therapy outcomes.

LM-4**How to Deal With Common Implant Prosthetic Nightmares****Julie Mitchell, DMD, MS**

Upon completion of this presentation, participants should be able to: 1) identify cases at the treatment planning phase where a dental implant fixture may become part of a future multi-unit prosthesis, and integrate older, serviceable implants into a new treatment plan; 2) describe modern abutment design options for single- and multi-unit prosthetics across various dental implant systems; and 3) plan for re-restoration of existing dental implants as single-unit or multi-unit prosthetics to improve esthetics, replace missing teeth, or restore vertical dimension.

LM-5**In-house Fabrication of Surgical Guides Using Digital Technologies****Clint Stevens, DDS**

Upon completion of this presentation, participants should be able to: 1) discuss the advantages of fully guided implant placement compared to free-handed placement; 2) identify the recent changes in digital technologies that make guided implant surgery accessible to everyone, for every case; and 3) implement the use of 3D-printed static surgical guides in daily practice with minimal hassle.

LM-6**Soft Tissue Manipulation Around Dental Implants****Shih-Chang Tseng, DDS**

Upon completion of this presentation, participants should be able to: 1) communicate with patients properly to enhance the value and production of soft tissue grafting into daily practice; 2) recognize the factors that may affect the outcomes of soft tissue grafting around dental implants and understand how to manage them properly to avoid unnecessary complications; and 3) describe how to maintain flexibility in terms of timing and selections of soft tissue grafts to promote patients' satisfactions and meet our clinical goals.

1:30 - 2:00 pm

Award Ceremony and Annual Business Meeting



2:00 - 5:00 pm

Prevent Implant Complications Through Meticulous Planning and Multi-discipline Approaches

Supported by a grant from the Jeffrey Lloyd Osseointegration Foundation Research and Education Fund.

Moderator: Joseph Kan, DDS, MS

2:00 - 2:45 pm

Avoid Implant Complications Through Phenotype Modifications: The Power of Soft Tissue Augmentation

Shih-Chang Tseng, DDS



Upon completion of this presentation, participants should be able to: 1) describe the indications, clinical procedures and technique of using soft tissue graft to modify the soft tissue components of peri-implant phenotype; 2) identify key factors that influence the outcome of soft tissue grafting around dental implants; and 3) explain how to enhance the predictability of soft tissue grafting by optimal donor site modifications and recipient site manipulations.

2:45 - 3:30 pm

Built to Last: Decision Making for Implant Placement in Medically Compromised Patients

Mia Geisinger, DDS, MS



Upon completion of this presentation, participants should be able to: 1) discuss medical risk factors associated with decreased rates of implant success; 2) stratify patients based upon their medical and dental history to allow for optimal patient outcomes; and 3) explain surgical protocol to mitigate risks for patients with increased risks of peri-implant disease.

3:30 - 4:15 pm

Use of Digital Technologies and Artificial Intelligence to Optimize Implant Therapy

George Mandelaris, DDS, MS



Upon completion of this presentation, participants should be able to: 1) identify the historical background of CT guided implant therapy; 2) describe the potential of CBCT treatment planning from a craniofacial perspective; and 3) explain the use of artificial intelligence in the future of implant therapy.

4:15 - 5:00 pm

Interdisciplinary Communication to Optimize the Results of Implant Therapy

Kumar Shah, BDS, MS, MBA



Upon completion of this presentation, participants should be able to: 1) discuss the intricate relationships between Prosthodontic, Surgical Team and other disciplines like Orthodontic; 2) describe the multi-disciplinary perspectives to develop a plan with interdisciplinary approaches; and 3) explain the role of Orthodontic treatment as facilitative treatment for improving esthetics and function of the final restorations.

5:00 pm
Meeting Adjourns



The Team Program is for all members of the dental team, including Dentists, Implant Treatment Coordinators, Hygienists and Assistants.

8:00 am - 4:00 pm

Registration for Team Program only: Members: \$200 - Non-Members: \$225
No charge for Annual Meeting Registrants. Please register online at www.osseo.org.

8:00 - 9:45 am

Effective Communication With the Lab Technician

Jack Marrano, CDT



Following this presentation, participants should be able to utilize today's technology to efficiently communicate with laboratory partners. Participants will see how this advanced digital communication between clinician and technician works in conjunction with advanced digital workflows to achieve more accurate results than have been achieved previously. Single unit implant cases to full-arch rehabilitations can benefit from these advancements. See how this communication between the implant team and restorative team aids in success and is realized by not only the practice but the final restorative result for the patient. Secure methods of patient sensitive data transfers will be discussed.

Upon completion of this presentation, participants should be able to: 1) discuss how to utilize technology to transfer data to the laboratory; 2) explain how to use technology to treatment plan cases for success; and 3) list secure methods for data transfer.

10:15 am - noon

Don't Have a Screw Loose! Supportive Dental Implant Therapy: Current Evidence and Protocols

Mia Geisinger, DDS, MS



Implant-related complications are common and difficult to manage. Many patient-, site-, and fixture-related factors convey risk of future peri-implant diseases and must be considered as a part of developing patient-centered implant maintenance plans. Such ongoing peri-implant maintenance protocols are critical for long-term implant success and survival. For these reasons, implant maintenance and patient-delivered home care that includes implant evaluation and delivery of supportive therapy in a individualized, risk-based schedule should be performed. This presentation will focus on common clinical scenarios and the mechanisms to employ primary prevention of peri-implant diseases through proactive, evidence-based implant maintenance.

Upon completion of this presentation, participants should be able to: 1) describe the patient-, site-, and fixture-related factors that may influence implant maintenance protocols; 2) assess the protocols and intervals that are the most appropriate based upon individual patient risk factors; and 3) evaluate peri-implant maintenance procedures to prevent disease and maintain peri-implant health.

9:45 - 10:15 am

Refreshment Break in the Exhibit Hall

Noon - 1:30 pm

Complimentary Lunch in the Exhibit Hall

Please register online
at www.osseo.org





The Team Program is for all members of the dental team, including Dentists, Implant Treatment Coordinators, Hygienists and Assistants.

8:00 am - 4:00 pm

Registration for Team Program only: Members: \$200 - Non-Members: \$225
No charge for Annual Meeting Registrants. Please register online at www.osseo.org.

1:30 - 2:45 pm

Effect of Mechanical Instrumentation on Implant Surface Debridement

Danielle Rulli, RDH, MS, DHSc



Biofilm has been implicated as the number one factor in peri-implant diseases. The purpose of supportive implant care and non-surgical treatment is to help manage and reduce biofilm and other factors to prevent and maintain peri-implant health. But is there a one-size-fits-all magic bullet? In this session, participants will examine the various approaches to effective implant surface debridement, and factors that can impact the efficacy.

Upon completion of this presentation, participants should be able to: 1) identify effective modalities for implant surface debridement; 2) compare and contrast implant surface debridement approaches; and 3) apply the concepts discussed into practice.

2:45 - 4:00 pm

The Use of Lasers for the Treatment of Peri-implant Diseases

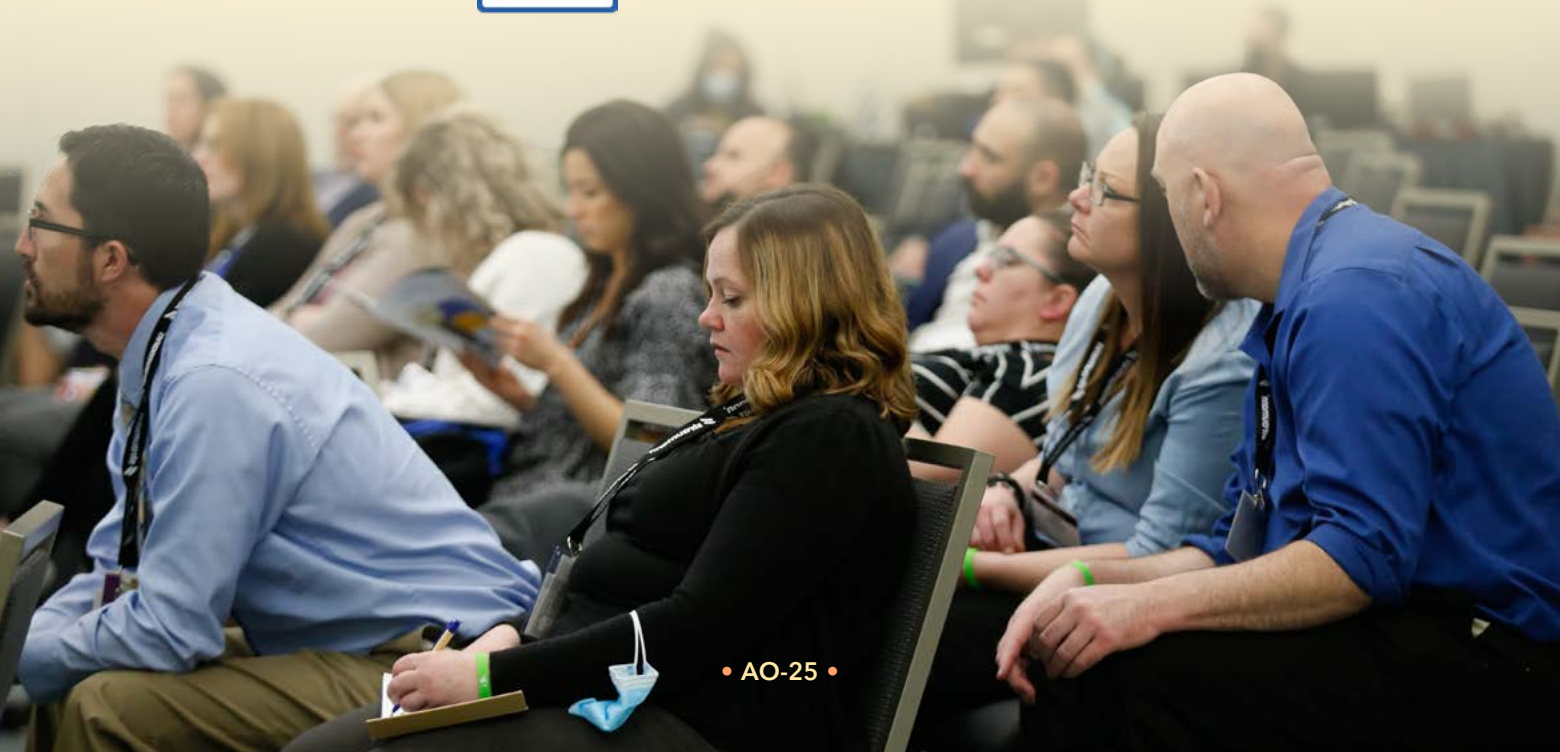
Paul Rosen, DMD, MS



Treating the biologic complications of peri-implant mucositis and peri-implantitis has remained a conundrum for clinicians. As the use of lasers in dentistry has continued to expand in both acceptance and application, employing them for managing these two conditions has been one approach to gaining greater predictability and success. This lecture will update the audience on scientific evidence for laser use for both peri-implant mucositis and peri-implantitis. Clinical cases will also be provided showcasing why different lasers are being employed by practitioners as an integral part for managing implant biologic complications.

Upon completion of this presentation, participants should be able to: 1) discuss what scientific evidence exists for each of the dental lasers for managing biologic complications; 2) explain the mechanism of action of each of the various lasers and how this fits into treatment for peri-implant mucositis and peri-implantitis; and 3) list the benefits to using lasers for managing biologic complications around dental implants.

Please register online
at www.osseo.org



Exhibitors



View the latest technological advances in the field of implant dentistry in the Exhibit Hall. Don't miss the latest products and services showcased by more than 70 companies on display throughout the meeting. Be sure to visit the exhibits and see the newest products to enhance your practice and improve patient care. The following is a list of exhibitors registered as of September 28, 2023.

- A. Titan Instruments
- ACE Southern
- Accurate Manufacturing, Inc.
- Alpine Pharmaceuticals
- Anatotemp
- Aseptico, Inc
- Augma Biomaterials (USA) Inc.
- ★ **BioHorizons**
- Brumaba USA, Inc.
- Carestream Dental LLC
- ClaroNav Inc.
- Cool Jaw By Medico
- Dental Care Alliance
- Dentium USA
- ★ **Dentsply Sirona**
- Designs for Vision, Inc.
- DoWell Dental Products, Inc.
- Geistlich
- H & H Company
- ★ **Hiossen Inc**
- Hu-FriedyGroup
- Impladent Ltd.
- Induce Biologics
- KLS Martin Group
- Keystone Dental Group
- KometaBio
- LumaDent Inc.
- ★ **Maxxeus**
- MegaGen America
- Meisinger USA
- Millennium Dental Technologies, Inc.
- NYU College of Dentistry
- Nobel Biocare USA
- OsteoCentric Technologies
- Osteogene Tech Corp
- Osteogenics Biomedical
- ★ **Quintessence Publishing Co, Inc.**
- ★ **SDS Swiss Dental Solutions**
- ★ **Salvin Dental Specialties, Inc**
- SigmaGraft Inc.
- ★ **Snoasis Medical, LLC**
- Southern Implants North America
- StellaLife, Inc.
- ★ **Straumann Group**
- Surgitel
- Thommen Medical
- TruAbutment, Inc.
- Ultralight Optics, Inc.
- Vatech America
- Versah
- W&H Impex, Inc.
- Weave
- X-Nav Technologies
- ZimVie

★ = 2024 Corporate Partner





Academy of Osseointegration Annual Meeting

March 7 - 9, 2024 • Charlotte, North Carolina

Westin Charlotte Hotel

601 S. College St.
Charlotte, NC 28202

\$269 Single & \$289 Double
(+15.25% tax per room/per night)

(Headquarters Hotel - 1/2 block from Convention Center)

Hilton Charlotte Uptown Hotel

222 E. 3rd St.
Charlotte, NC 28202

\$229 Single / Double
(+15.25% tax per room/per night)

(1½ blocks from Convention Center)

Embassy Suites Charlotte Uptown Hotel

401 E. M.L.K. Jr. Blvd.
Charlotte, NC 28202

\$239 Single / Double
(+15.25% tax per room/per night)

(1 block from Convention Center)

For best availability, make your reservation online at

Internet: <https://compass.onpeak.com/e/012606870>

Phone: 855-904-2787 (US & Canada)
312-527-7300 (International)
Mon. - Fri., 9:00 am - 5:30 pm ET



You can also contact AO housing via our support center by emailing AHotels@onpeak.com.

Hotel reservations / rate availability are not guaranteed after the room block is full or after Friday, February 2, 2024.

Please register early - only a limited number of rooms are available.

A portion of the room rate will subsidize the cost of the meeting space rental.

WARNING! onPeak is the only official hotel provider associated with the AO Annual Meeting. We have received reports that other companies are posing as official travel vendors for the Annual Meeting and may contact you offering hotels for your trip. They are not endorsed by or affiliated with the show and entering into financial agreements with such companies is not advised.

DEADLINE FOR HOTEL RESERVATIONS IS FRIDAY, FEBRUARY 2, 2024